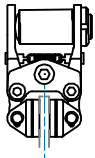


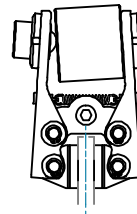
**PPV ...**  
Pag. 24



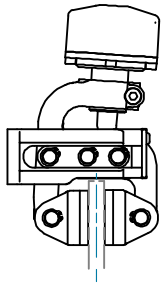
**PPC C ...**  
Pag. 25



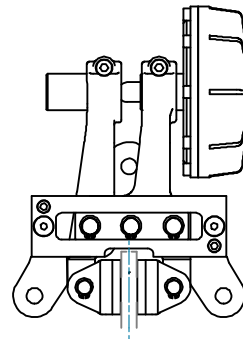
**PPA A ...**  
Pag. 26-27



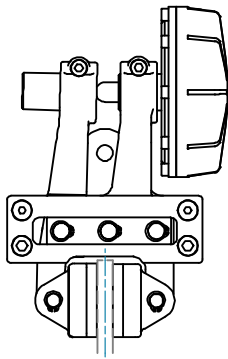
**PPB ...**  
Pag. 28-29



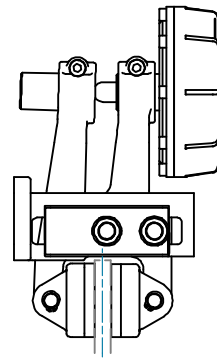
**PPD ...**  
Pag. 30-31



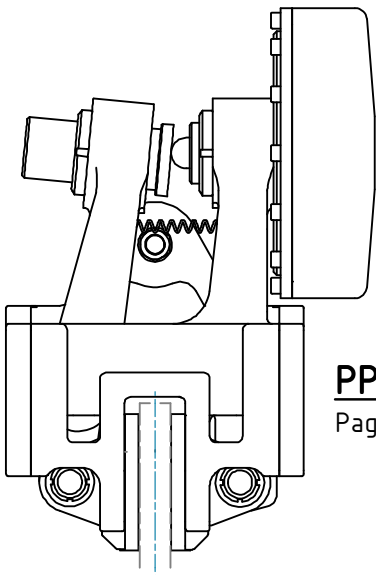
**PPF ...**  
Pag. 32-33



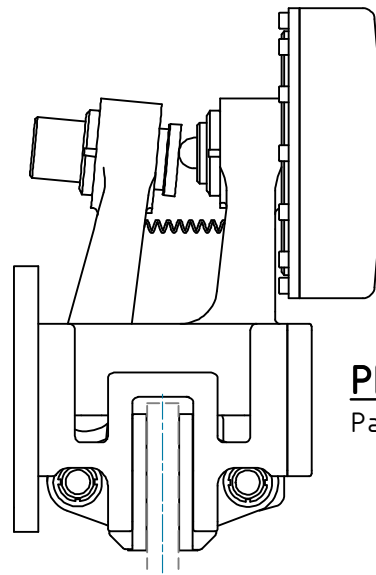
**PPH ...**  
Pag. 34-35



**PPHP ...**  
Pag. 36-37



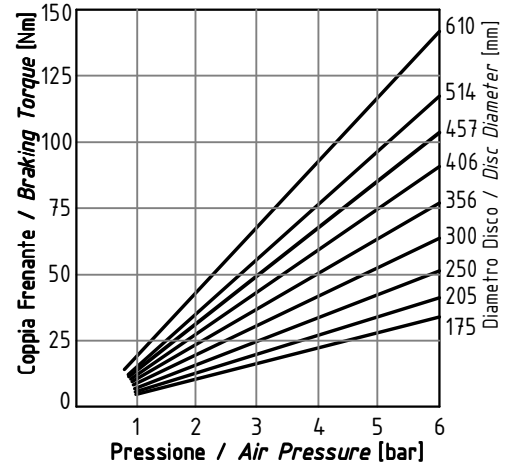
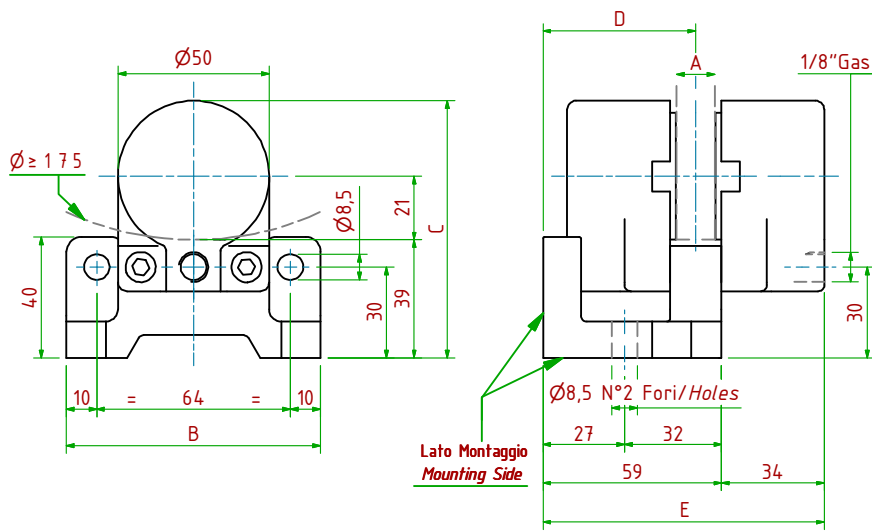
**PPT ...**  
Pag. 38-39



**PPTP ...**  
Pag. 40-41

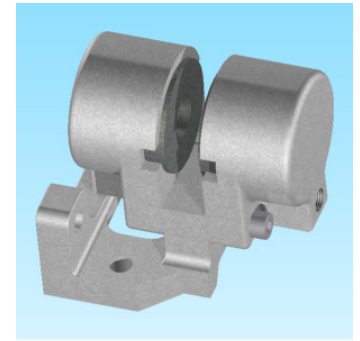
PPV045/□□□

气动应用 / Pneumatically Applied



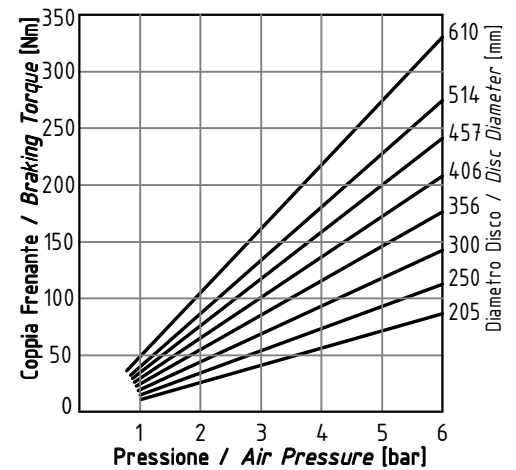
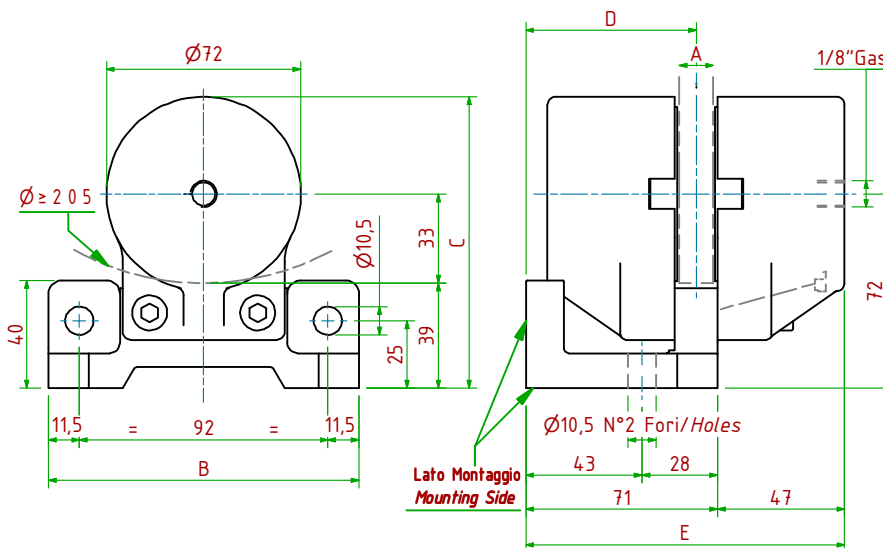
- 工作气压/Operating Pressure: **Pl= 6bar** - 最大气缸容积/Max Cylinder Volume: **12cm**
- 制动扭矩/Braking Torque: **Md= [Ftx(Φ(m)/2-0.021(m))]**  
 注意: 初始制动扭矩可以低于 30%-50% **Warning: Initial Braking Torque can be lower of 30%-50%**
- 摩擦片的最大总磨损量/Maximum total wear of pads =8mm

MODELLO/ MODEL	CODICE/ CODE	A	B	C	D	E	Forza Frenante/Braking Force	Peso
PPV045/ 08	19.16.M045.02	8	84	85	50.5	93	Ft= 500N (6bar)	0.6kg
PPV045/12.7	19.16.M045.03	12.7	84	85	50.5	93	Ft= 500N (6bar)	0.6kg



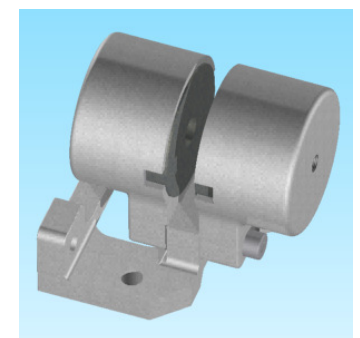
PPV065/□□□

气动应用 / Pneumatically Applied



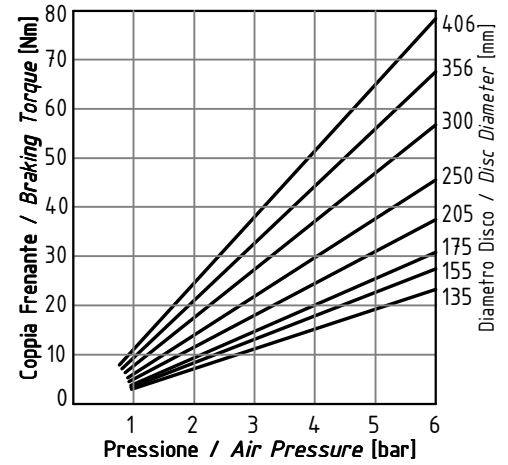
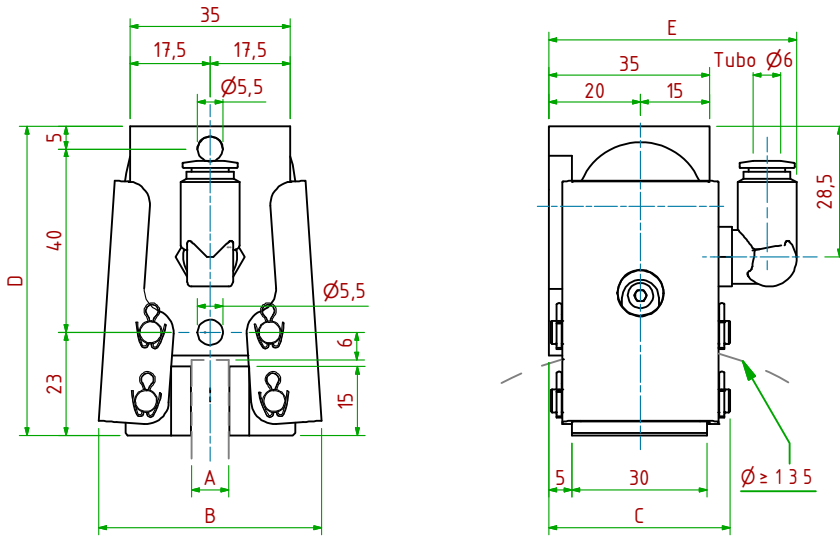
- 工作气压/Operating Pressure: **Pl= 6bar** - 最大气缸容积/Max Cylinder Volume: **27cm**
- 制动扭矩/Braking Torque: **Md= [Ftx(Φ(m)/2-0.033(m))]**  
**Importante:** La Coppia Frenante Iniziale può essere più bassa del 30%-50% **Warning: Initial Braking Torque can be lower of 30%-50%**
- Usura Ferodi Massima Totale/Maximum total wear of pads =10mm

MODELLO/ MODEL	CODICE/ CODE	A	B	C	D	E	Forza Frenante/Braking Force	Peso
PPV065/ 08	19.16.M065.02	8	115	108	63	118	Ft= 1220N (6bar)	1.3kg
PPV065/12.7	19.16.M065.03	12.7	115	108	63	118	Ft= 1220N (6bar)	1.3kg



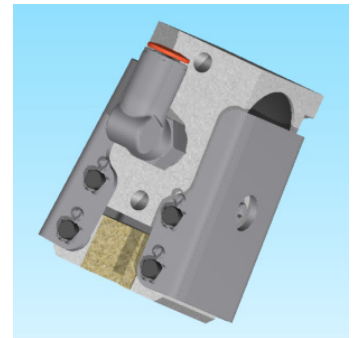
PPC C01/□□□

气动应用 / Pneumatically Applied



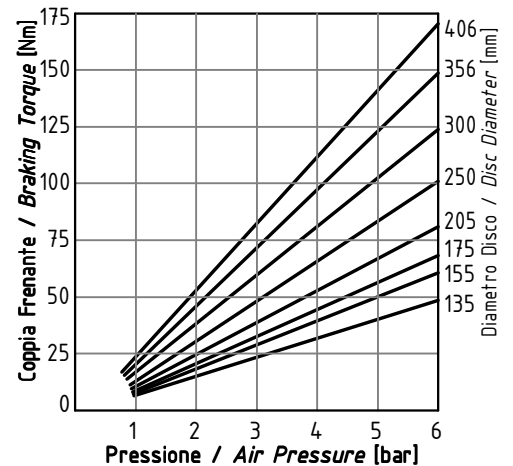
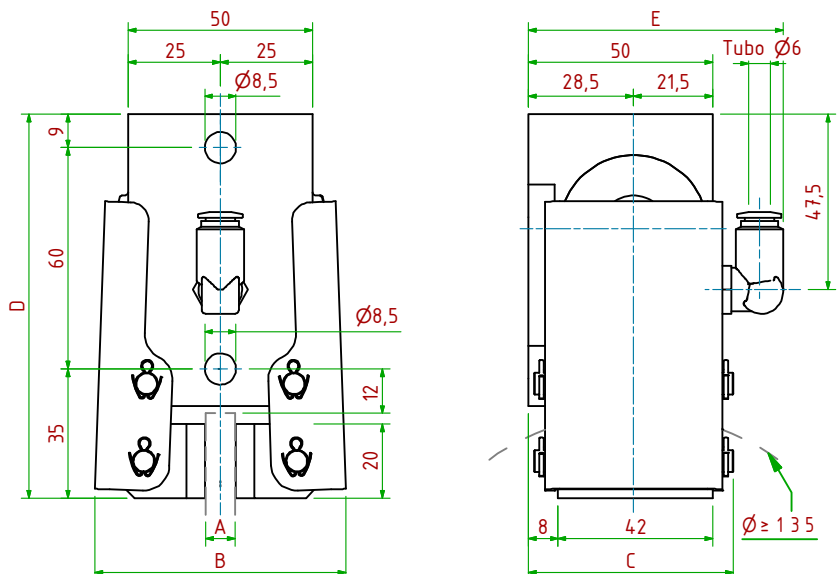
- 工作气压/Operating Pressure: **Pl= 6bar** - 最大气缸容积/Max Cylinder Volume: **4 cm**
- 制动扭矩/Braking Torque: **Md= [Ftx(Φ(m)/2-0.009(m))]**  
**Importante:** La Coppia Frenante Iniziale può essere più bassa del 30%-50% **Warning:** Initial Braking Torque can be lower of 30%-50%
- Usura massima totale Ferodi/Maximum total wear of pads:  
 PPC C01/08 =8mm      PPC C01/12.7 =4mm

MODELLO/ MODEL	CODICE/ CODE	A	B	C	D <sub>Max</sub>	E <sub>Max</sub>	Forza Frenante/Braking Force	Peso
PPC C01/ 08	19.16.C01.02	8	50	40	68	57	Ft= 400N (6bar)	0.4kg
PPC C01/12.7	19.16.C01.03	12.7	50	40	68	57	Ft= 400N (6bar)	0.4kg



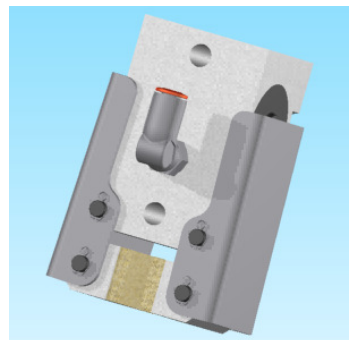
PPC C02/□□□

气动应用 / Pneumatically Applied



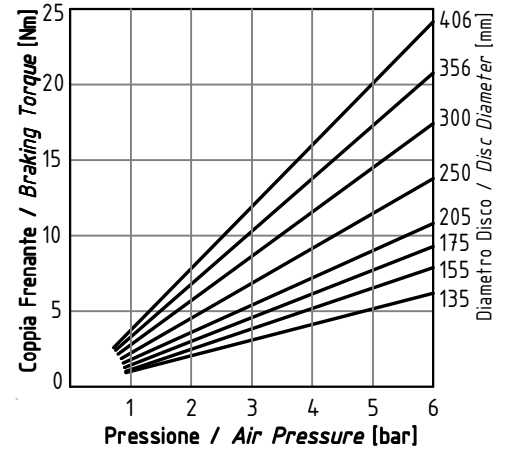
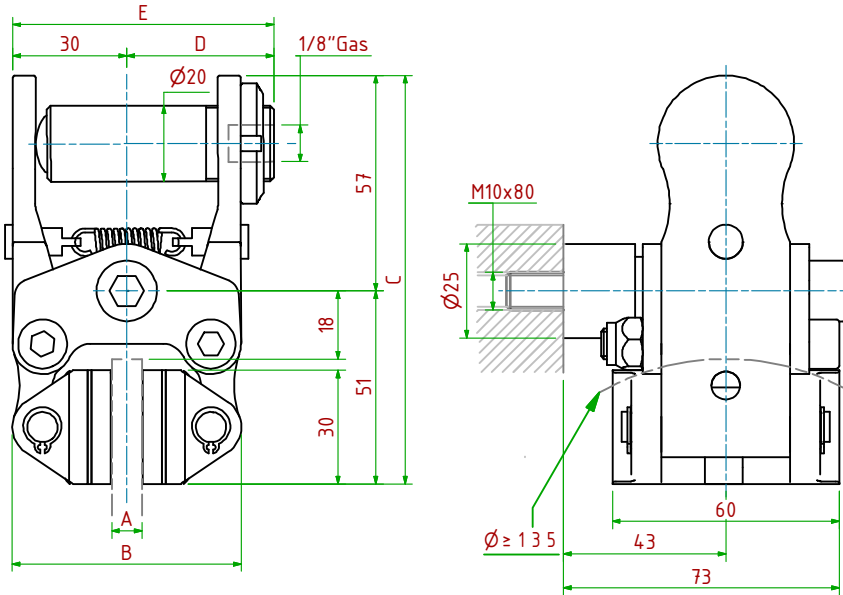
- 工作气压/Operating Pressure: **Pl= 6bar** - 最大气缸容积/Max Cylinder Volume: **10cm**
- 制动扭矩/Braking Torque: **Md= [Ftx(Φ(m)/2-0.013(m))]**  
**Importante:** La Coppia Frenante Iniziale può essere più bassa del 30%-50% **Warning:** Initial Braking Torque can be lower of 30%-50%
- Usura massima totale Ferodi/Maximum total wear of pads:  
 PPC C02/08 =8mm      PPC C02/12.7 =4mm

MODELLO/ MODEL	CODICE/ CODE	A	B	C	D <sub>Max</sub>	E <sub>Max</sub>	Forza Frenante/Braking Force	Peso
PPC C02/ 08	19.16.C02.02	8	68	56	104	72	Ft= 900N (6bar)	1.1 kg
PPC C02/12.7	19.16.C02.03	12.7	68	56	104	72	Ft= 900N (6bar)	1.1 kg



PPA A01/□□□

气动应用 / Pneumatically Applied



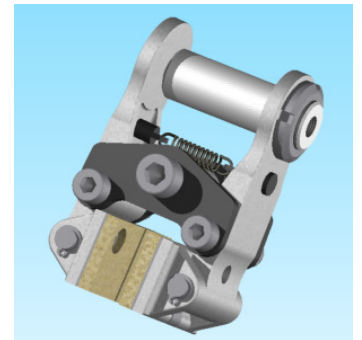
- 工作气压/Operating Pressure: **PI= 6bar** - 最大气缸容积/Max Cylinder Volume: **1 cm**

- 制动扭矩/Braking Torque: **Md= [Ft x (Φ(m)/2 - 0.018(m))]**

**Importante:** La Coppia Frenante Iniziale può essere più bassa del 30%-50% **Warning:** Initial Braking Torque can be lower of 30%-50%

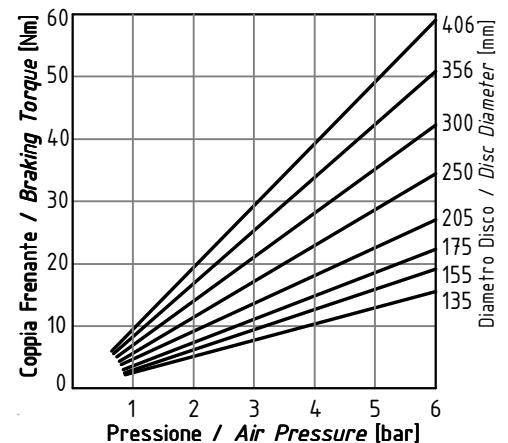
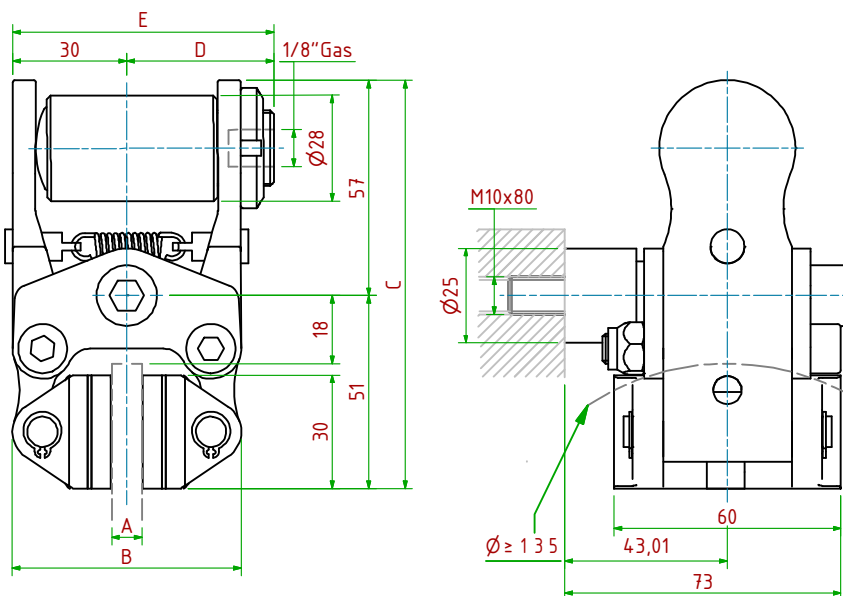
- Usura massima totale Ferodi/Maximum total wear of pads =5mm

MODELLO/ MODEL	CODICE/ CODE	A	B	C	DMax	EMax	Forza Frenante/Braking Force	Peso
PPA A01/ 08	19.16.A01.02	8	61	108	39	69	Ft= 130N (6bar)	0.6kg
PPA A01/12.7	19.16.A01.03	12.7	65	108	39	69	Ft= 130N (6bar)	0.6kg



PPA A02/□□□

气动应用 / Pneumatically Applied



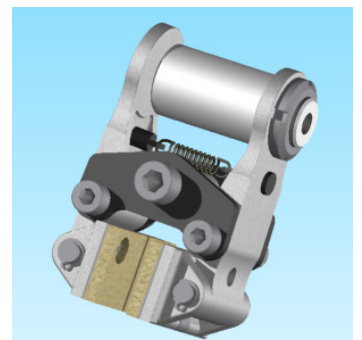
- 工作气压/Operating Pressure: **PI= 6bar** - 最大气缸容积/Max Cylinder Volume: **2 cm**

- 制动扭矩/Braking Torque: **Md= [Ft x (Φ(m)/2 - 0.018(m))]**

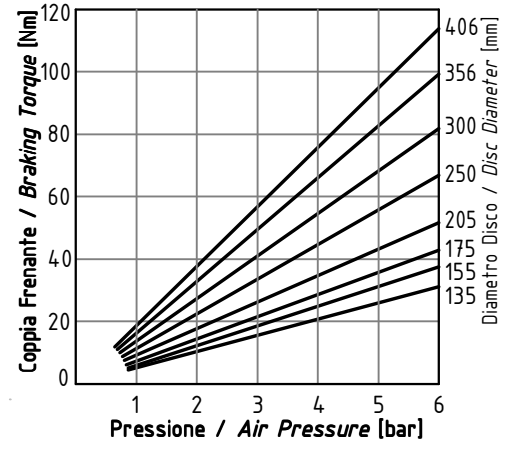
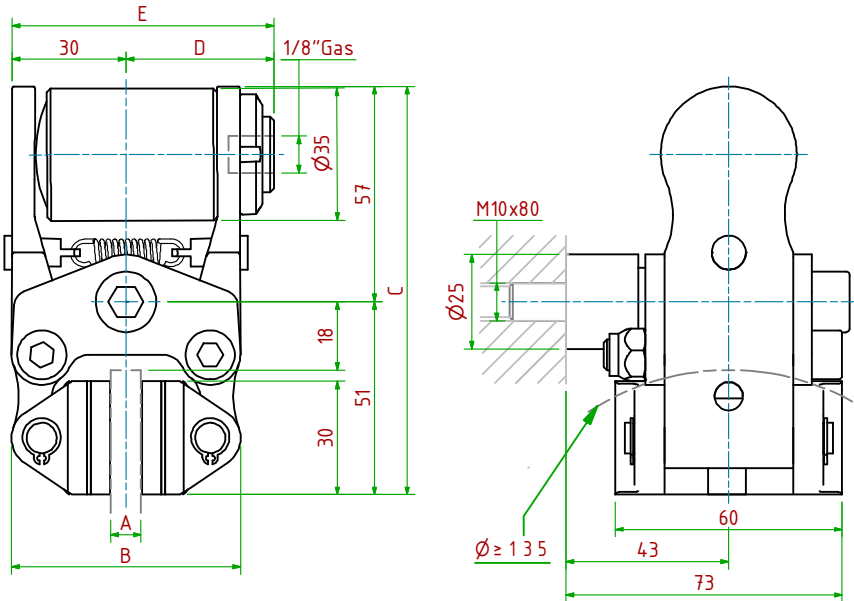
**Importante:** La Coppia Frenante Iniziale può essere più bassa del 30%-50% **Warning:** Initial Braking Torque can be lower of 30%-50%

- Usura massima totale Ferodi/Maximum total wear of pads =5mm

MODELLO/ MODEL	CODICE/ CODE	A	B	C	DMax	EMax	Forza Frenante/Braking Force	Peso
PPA A02/ 08	19.16.A02.02	8	61	108	39	69	Ft= 320N (6bar)	0.7kg
PPA A02/12.7	19.16.A02.03	12.7	65	108	39	69	Ft= 320N (6bar)	0.7kg

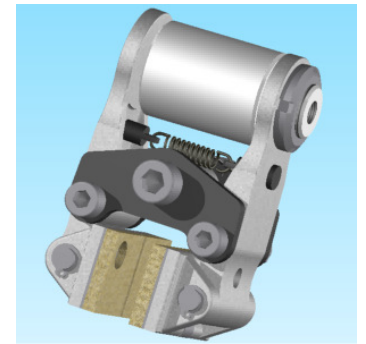


**PPA A03/□□□** 气动应用 / Pneumatically Applied



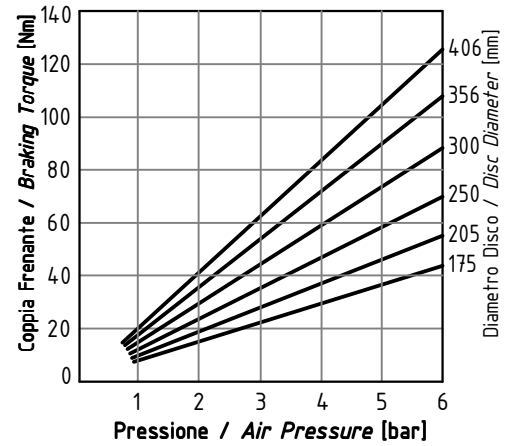
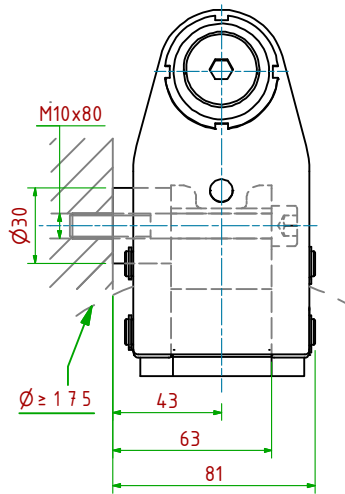
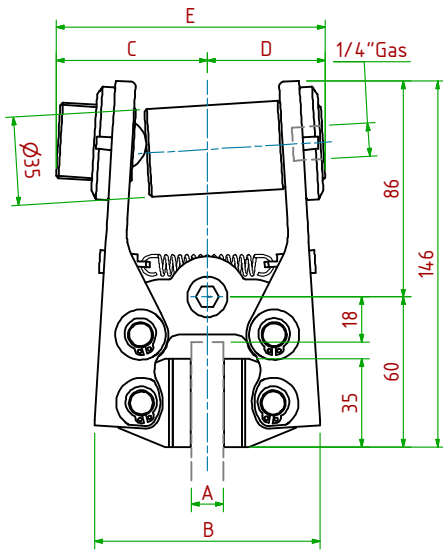
- 工作气压/Operating Pressure: **PI= 6bar** - 最大气缸容积/Max Cylinder Volume: **3 cm**
- 制动扭矩/Braking Torque: **Md= [Ft x (Φ(m)/2 - 0.018(m))]**  
**Importante:** La Coppia Frenante Iniziale può essere più bassa del 30%-50% **Warning:** Initial Braking Torque can be lower of 30%-50%
- Usura massima totale Ferodi/Maximum total wear of pads =5mm

MODELLO/MODEL	CODICE/ CODE	A	B	C	D <sub>Max</sub>	E <sub>Max</sub>	Forza Frenante/Braking Force	Peso
PPA A03/ 08	19.16.A03.02	8	61	108	39	69	Ft= 620N (6bar)	0.8kg
PPA A03/12.7	19.16.A03.03	12.7	65	108	39	69	Ft= 620N (6bar)	0.8kg



PPB001/□□□

气动应用 / Pneumatically Applied



3

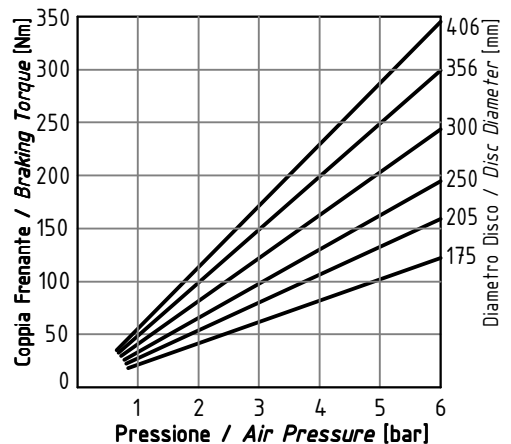
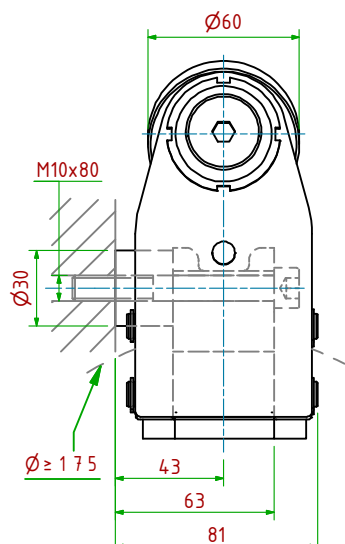
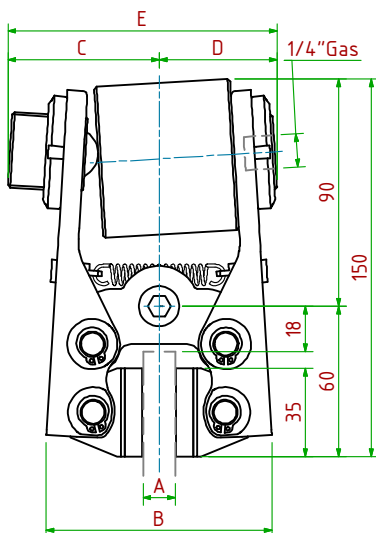


- 工作气压/Operating Pressure: **PI=6bar** - 最大气缸容积/Max Cylinder Volume: **3m**
- 制动扭矩/Braking Torque: **Md= [Ftx(Φ(m))/2-0.024(m)]**
- **Importante:** La Coppia Frenante Iniziale può essere più bassa del 30%-50% **Warning:** Initial Braking Torque can be lower of 30%-50%
- Usura Ferodi Massima Totale/Maximum total wear of pads =7mm

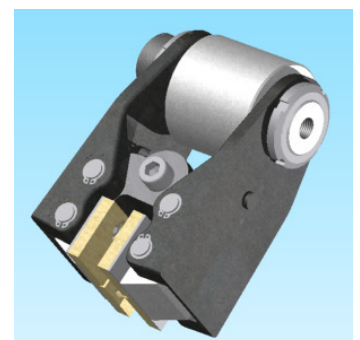
MODELLO/MODEL	CODICE/ CODE	A	B	C	D <sub>Max</sub>	E <sub>Max</sub>	Forza Frenante/Braking Force	Peso
PPB001/ 08	19.16.001.02	8	86	60	55	115	Ft= 700N (6bar)	2.4kg
PPB001/12.7	19.16.001.03	12.7	90	60	55	115	Ft= 700N (6bar)	2.5kg
PPB001/25.4	19.16.001.04	25.4	102	60	63	123	Ft= 700N (6bar)	2.6kg

PPB002/□□□

气动应用 / Pneumatically Applied



3

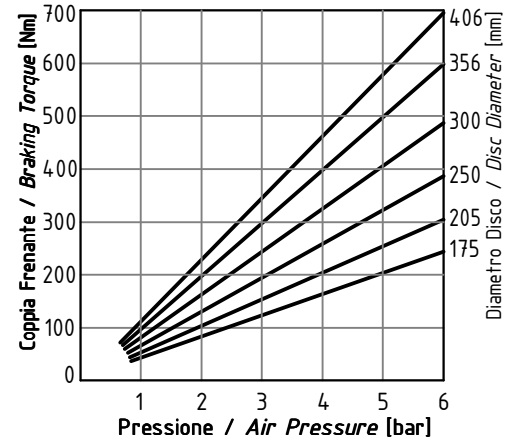
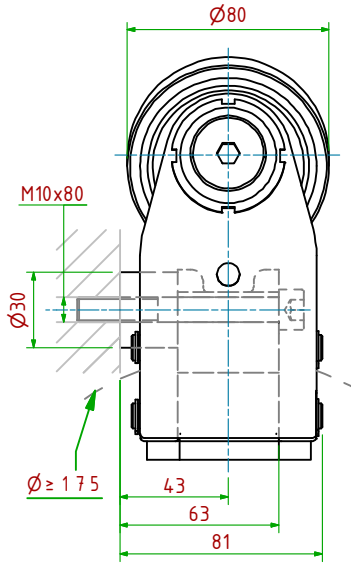
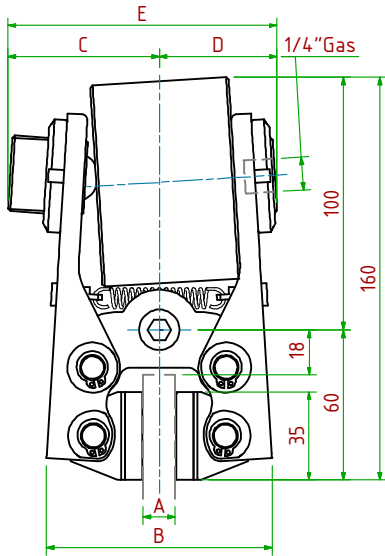


- 工作气压/Operating Pressure: **PI=6bar** - 最大气缸容积/Max Cylinder Volume: **8cm**
- 制动扭矩/Braking Torque: **Md= [Ftx(Φ(m))/2-0.024(m)]**
- **Importante:** La Coppia Frenante Iniziale può essere più bassa del 30%-50% **Warning:** Initial Braking Torque can be lower of 30%-50%
- Usura Ferodi Massima Totale/Maximum total wear of pads =7mm

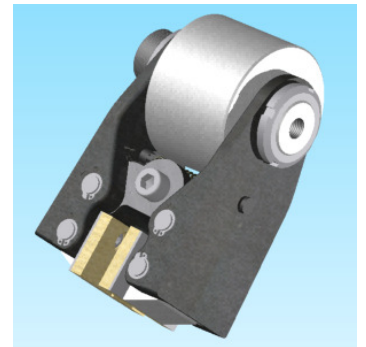
MODELLO/ MODEL	CODICE/ CODE	A	B	C	D <sub>Max</sub>	E <sub>Max</sub>	Forza Frenante/Braking Force	Peso
PPB002/ 08	19.16.002.02	8	86	60	55	115	Ft= 1950N (6bar)	2.6kg
PPB002/12.7	19.16.002.03	12.7	90	60	55	115	Ft= 1950N (6bar)	2.7kg
PPB002/25.4	19.16.002.04	25.4	102	60	63	123	Ft= 1950N (6bar)	2.8kg

PPB003/□□□

气动应用 / Pneumatically Applied



3



- 工作气压/Operating Pressure: **Pl= 6bar** - 最大气缸容积/Max Cylinder Volume: **16 cm**

- Coppia Frenante/Braking Torque:  $Md = [Ft \times (\Phi(m)/2 - 0.024(m))]$

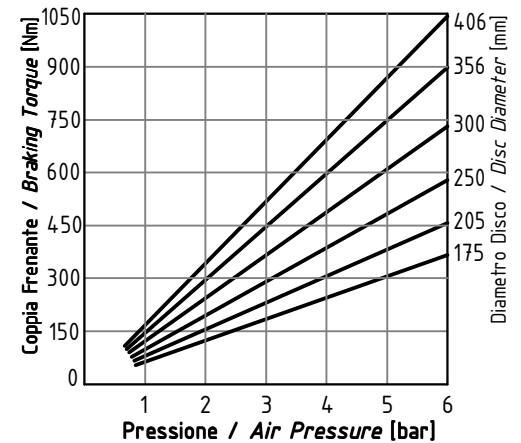
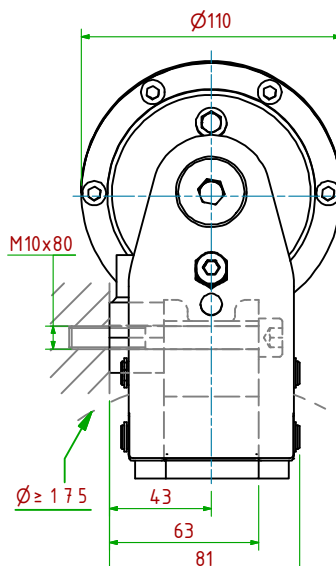
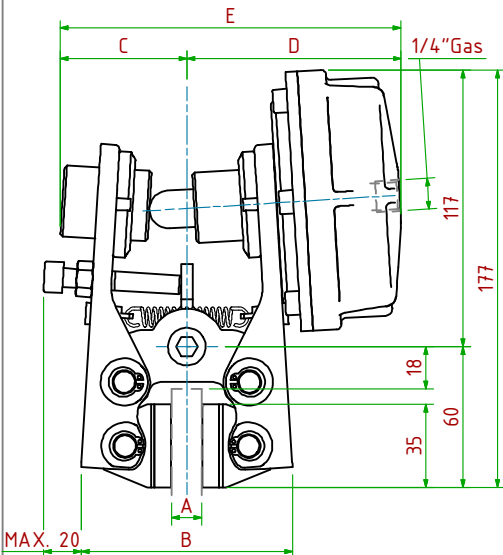
**Importante:** La Coppia Frenante Iniziale può essere più bassa del 30%-50% **Warning:** Initial Braking Torque can be lower of 30%-50%

- Usura Ferodi Massima Totale/Maximum total wear of pads =7mm

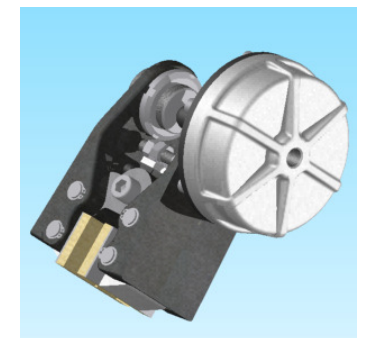
MODELLO/ MODEL	CODICE/ CODE	A	B	C	D <sub>Max</sub>	E <sub>Max</sub>	Forza Frenante/Braking Force	Peso
PPB003/ 08	19.16.003.02	8	86	60	55	115	Ft= 3890N (6bar)	2.8kg
PPB003/12.7	19.16.003.03	12.7	90	60	55	115	Ft= 3890N (6bar)	2.9kg
PPB003/25.4	19.16.003.04	25.4	102	60	63	123	Ft= 3890N (6bar)	3.0kg

PPB004/□□□

气动应用 / Pneumatically Applied



3



- 工作气压/Operating Pressure: **Pl= 6bar** - 最大气缸容积/Max Cylinder Volume: **63cm**

- Coppia Frenante/Braking Torque:  $Md = [Ft \times (\Phi(m)/2 - 0.024(m))]$

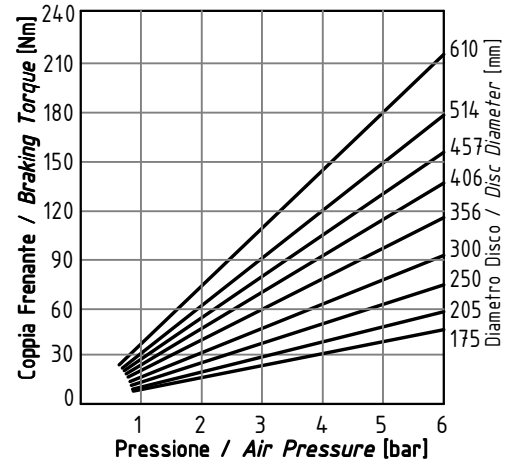
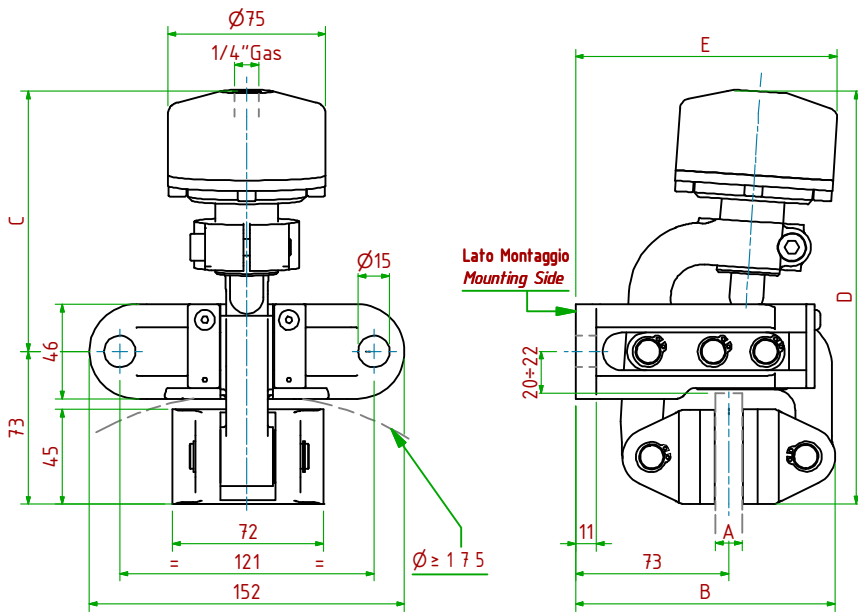
**Importante:** La Coppia Frenante Iniziale può essere più bassa del 30%-50% **Warning:** Initial Braking Torque can be lower of 30%-50%

- Usura Ferodi Massima Totale/Maximum total wear of pads =7mm

MODELLO/ MODEL	CODICE/ CODE	A	B	C	D <sub>Max</sub>	E <sub>Max</sub>	Forza Frenante/Braking Force	Peso
PPB004/ 08	19.16.004.02	8	86	54	99	153	Ft= 5900N (6bar)	4.1kg
PPB004/12.7	19.16.004.03	12.7	90	54	100	154	Ft= 5900N (6bar)	4.2kg
PPB004/25.4	19.16.004.04	25.4	102	70	107	177	Ft= 5900N (6bar)	4.3kg

PPD011/□□□

气动应用 / Pneumatically Applied



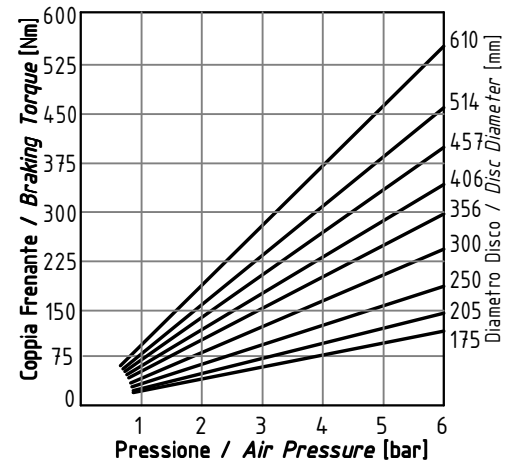
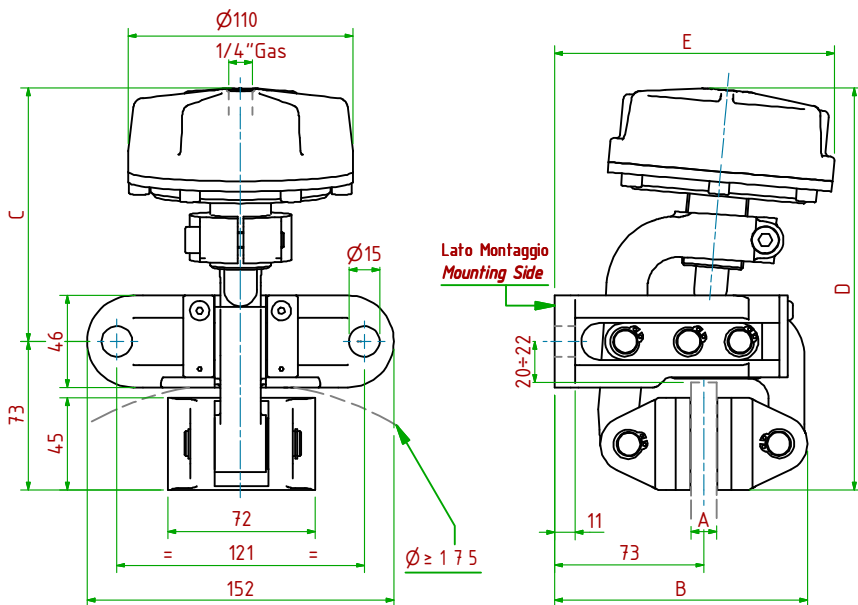
- 工作气压/Operating Pressure: **Pl= 6bar**
  - 最大气缸容积/Max Cylinder Volume: **27 cm<sup>3</sup>**
  - Coppia Frenante/Braking Torque: **Md= [Ftx(Φ(m)/2-0.029(m))]**
  - Usura Ferodi Massima Totale/Maximum total wear of pads =9mm
- Importante:** La Coppia Frenante Iniziale può essere più bassa del 30%-50% **Warning:** Initial Braking Torque can be lower of 30%-50%

MODELLO / MODEL	CODICE / CODE	A	B	C	D <sub>Max</sub>	E <sub>Max</sub>	Forza Frenante/Braking Force	Peso
PPD011/12.7	19.16.011.03	12.7	124	127	200	125	Ft= 780N (6bar)	4.6 kg
PPD011/25.4	19.16.011.04	25.4	130	127	200	127	Ft= 780N (6bar)	4.7 kg



PPD012/□□□

气动应用 / Pneumatically Applied



- 工作气压/Operating Pressure: **Pl= 6bar**
  - 最大气缸容积/Max Cylinder Volume: **63 cm<sup>3</sup>**
  - Coppia Frenante/Braking Torque: **Md= [Ftx(Φ(m)/2-0.029(m))]**
  - Usura Ferodi Massima Totale/Maximum total wear of pads =9mm
- Importante:** La Coppia Frenante Iniziale può essere più bassa del 30%-50% **Warning:** Initial Braking Torque can be lower of 30%-50%

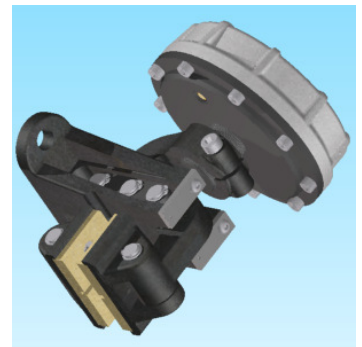
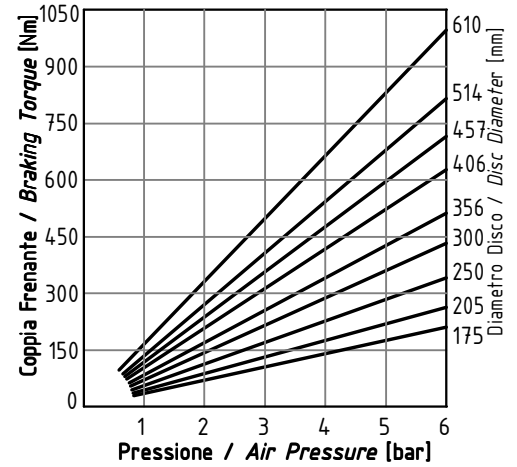
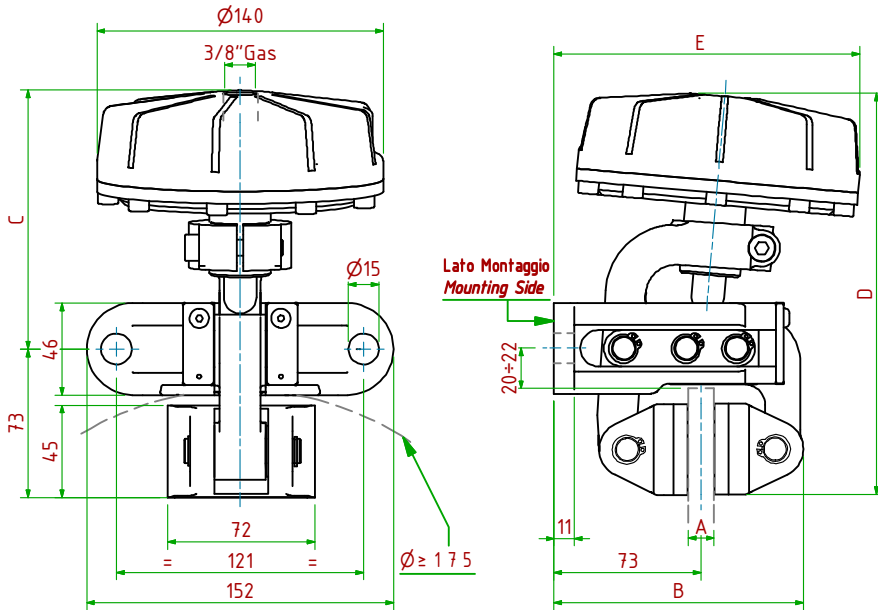
MODELLO / MODEL	CODICE / CODE	A	B	C	D <sub>Max</sub>	E <sub>Max</sub>	Forza Frenante/Braking Force	Peso
PPD012/12.7	19.16.012.03	12.7	124	127	200	137	Ft= 2000N (6bar)	5.2 kg
PPD012/25.4	19.16.012.04	25.4	130	127	200	140	Ft= 2000N (6bar)	5.3 kg





PPD013/□□□

气动应用 / Pneumatically Applied

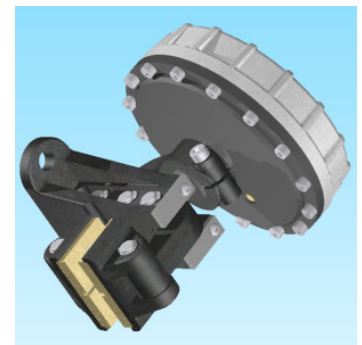
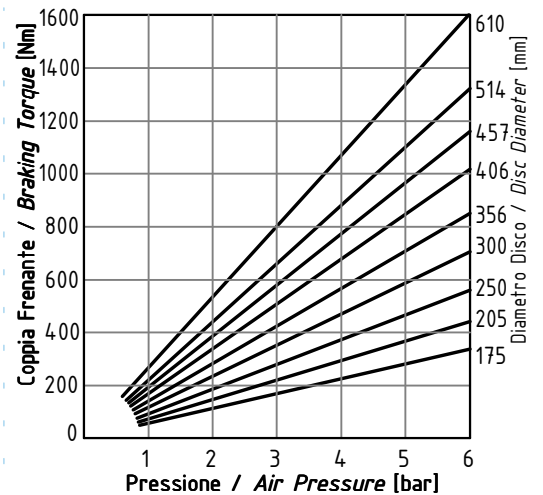
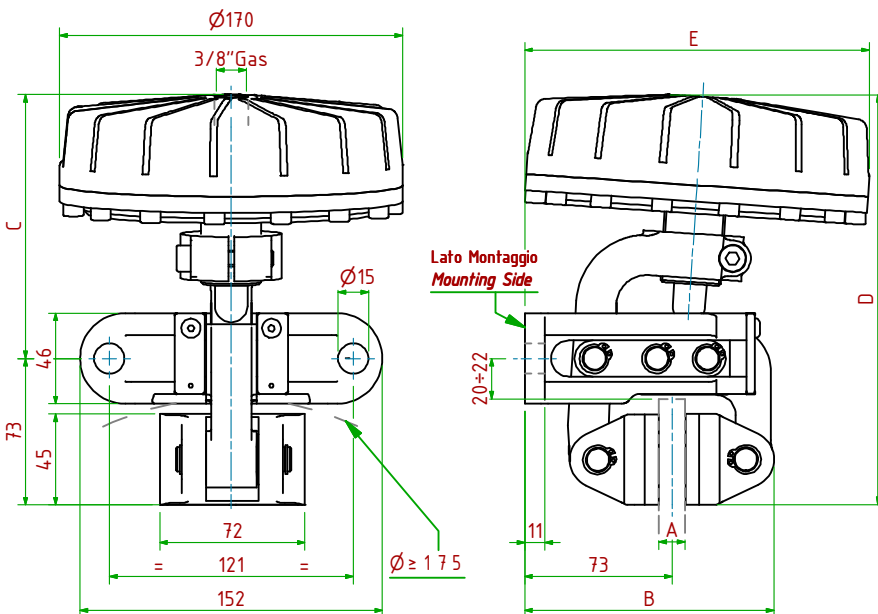


- 工作压力/Operating Pressure: **Pl= 6bar**
- 最大气缸容积/Max Cylinder Volume: **110cm<sup>3</sup>**
- Coppia Frenante/Braking Torque: **Md= [Ftx(Φ(m)/2-0.029(m))]**
- Usura Ferodi Massima Totale/Maximum total wear of pads =9mm

MODELLO/ MODEL	CODICE/ CODE	A	B	C	D <sub>Max</sub>	E <sub>Max</sub>	Forza Frenante/Braking Force	Peso
PPD013/12.7	19.16.013.03	12.7	124	129	202	152	Ft= 3600N (6bar)	6.1 kg
PPD013/25.4	19.16.013.04	25.4	130	129	202	157	Ft= 3600N (6bar)	6.2 kg

PPD014/□□□

气动应用 / Pneumatically Applied

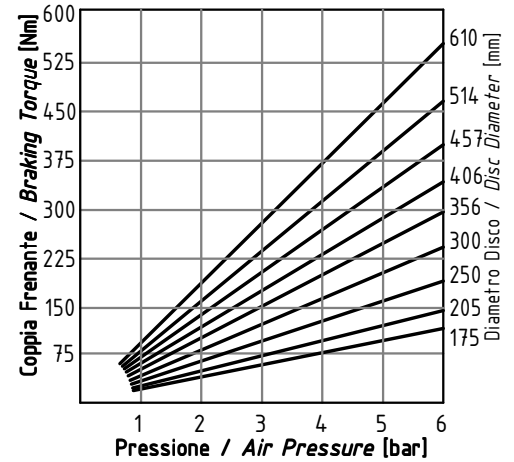
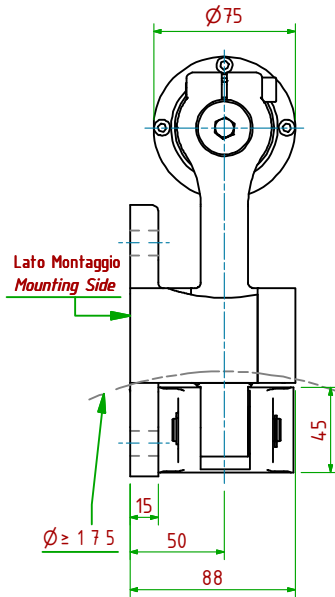
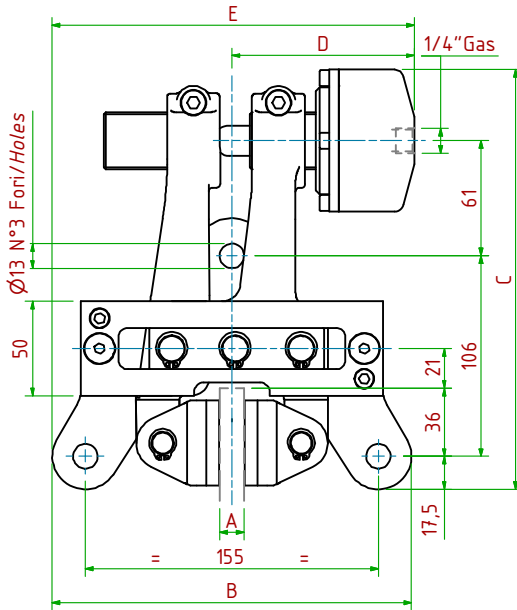


- 工作压力/Operating Pressure: **Pl= 6bar**
- 最大气缸容积/Max Cylinder Volume: **175cm<sup>3</sup>**
- Coppia Frenante/Braking Torque: **Md= [Ftx(Φ(m)/2-0.029(m))]**
- Usura Ferodi Massima Totale/Maximum total wear of pads =9mm

MODELLO/ MODEL	CODICE/ CODE	A	B	C	D <sub>Max</sub>	E <sub>Max</sub>	Forza Frenante/Braking Force	Peso
PPD014/12.7	19.16.014.03	12.7	124	133	206	171	Ft= 5800N (6bar)	7.8 kg
PPD014/25.4	19.16.014.04	25.4	130	133	206	171?	Ft= 5800N (6bar)	7.9 kg

PPF021/ □ □ □

气动应用 / Pneumatically Applied

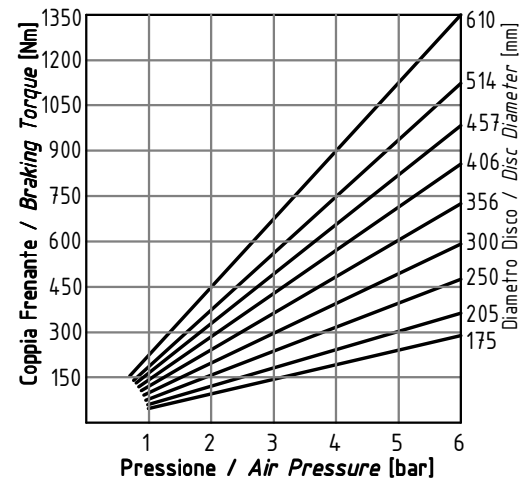
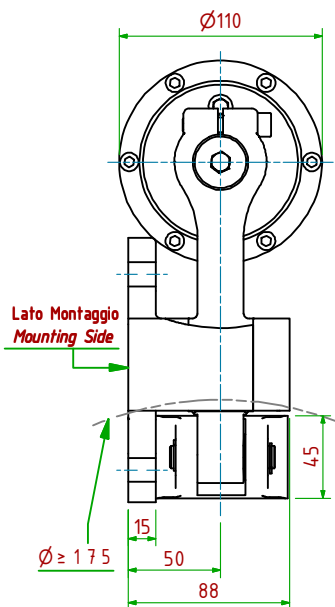
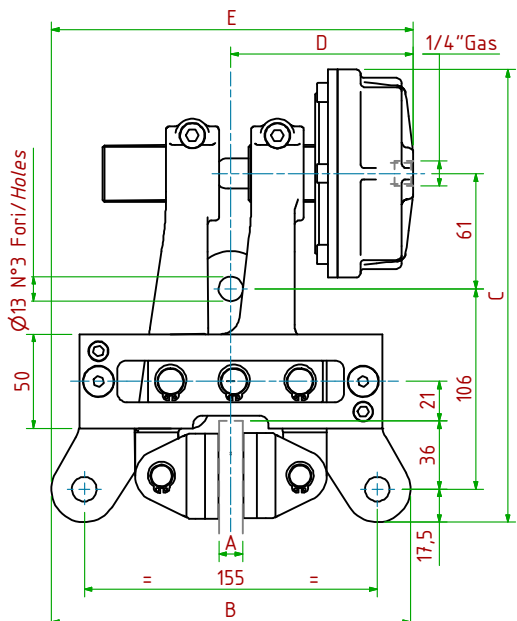


- 工作气压 / Operating Pressure: **Pl = 6bar**
- 最大气缸容积 / Max Cylinder Volume: **27 cm<sup>3</sup>**
- Coppia Frenante / Braking Torque: **Md = [Ft x (Φ(m) / 2 - 0.029(m))]**
- **Importante:** La Coppia Frenante Iniziale può essere più bassa del 30%-50% **Warning:** Initial Braking Torque can be lower of 30%-50%
- Usura Ferodi Massima Totale / Maximum total wear of pads = 9mm

MODELLO / MODEL	CODICE / CODE	A	B	C	D <sub>Max</sub>	E <sub>Max</sub>	Forza Frenante / Braking Force	Peso
PPF021/12.7	19.16.021.03	12.7	190	222	97	192	Ft = 2000N (6bar)	8.2 kg
PPF021/25.4	19.16.021.04	25.4	190	222	99	194	Ft = 2000N (6bar)	8.4 kg

PPF022/ □ □ □

气动应用 / Pneumatically Applied

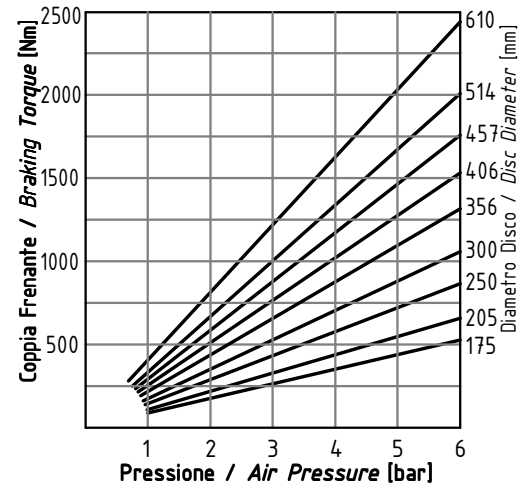
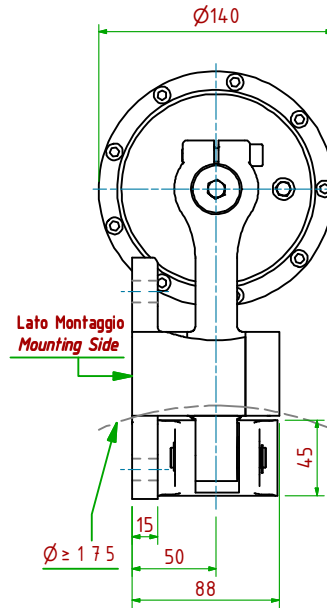
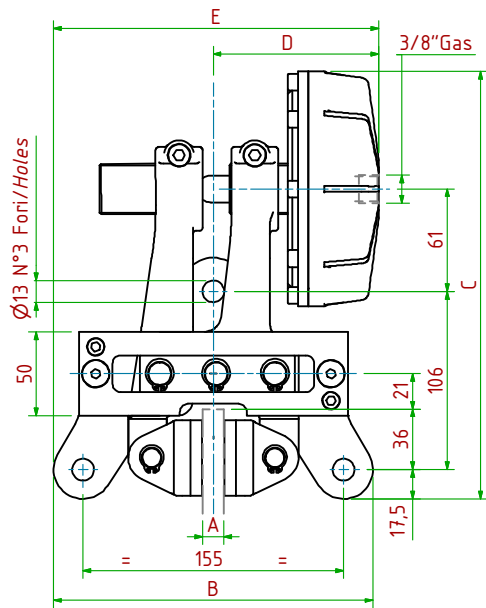


- 工作气压 / Operating Pressure: **Pl = 6bar**
- 最大气缸容积 / Max Cylinder Volume: **63 cm<sup>3</sup>**
- Coppia Frenante / Braking Torque: **Md = [Ft x (Φ(m) / 2 - 0.029(m))]**
- **Importante:** La Coppia Frenante Iniziale può essere più bassa del 30%-50% **Warning:** Initial Braking Torque can be lower of 30%-50%
- Usura Ferodi Massima Totale / Maximum total wear of pads = 9mm

MODELLO / MODEL	CODICE / CODE	A	B	C	D <sub>Max</sub>	E <sub>Max</sub>	Forza Frenante / Braking Force	Peso
PPF022/12.7	19.16.022.03	12.7	190	240	97	192	Ft = 4900N (6bar)	8.9 kg
PPF022/25.4	19.16.022.04	25.4	190	240	99	194	Ft = 4900N (6bar)	9.1 kg

PPF023/ □ □ □

气动应用 / Pneumatically Applied

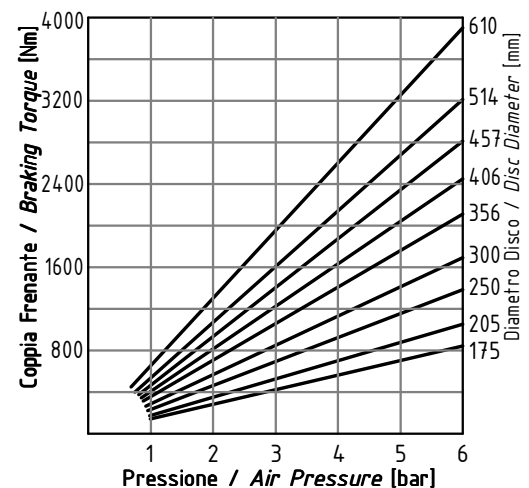
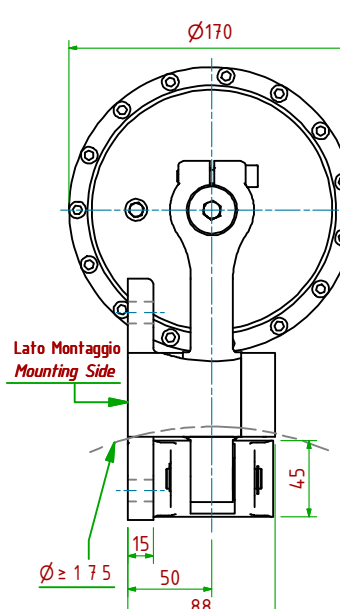
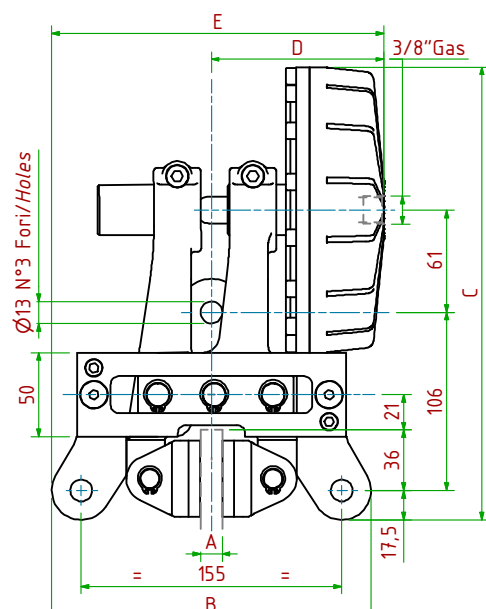


- 工作气压/Operating Pressure: **Pl= 6bar** - 最大气缸容积/Max Cylinder Volume: **110cm<sup>3</sup>**
- Coppia Frenante/Braking Torque: **Md= [Ft x Φ(m) / 2 - 0.029(m)]**
- Importante:** La Coppia Frenante Iniziale può essere più bassa del 30%-50% **Warning:** Initial Braking Torque can be lower of 30%-50%
- Usura Ferodi Massima Totale/Maximum total wear of pads =9mm

MODELLO / MODEL	CODICE / CODE	A	B	C	D <sub>Max</sub>	E <sub>Max</sub>	Forza Frenante/Braking Force	Peso
PPF023/12.7	19.16.023.03	12.7	190	255	99	194	Ft= 8800N (6bar)	10.0kg
PPF023/25.4	19.16.023.04	25.4	190	255	101	196	Ft= 8800N (6bar)	10.2kg

PPF024/ □ □ □

气动应用 / Pneumatically Applied

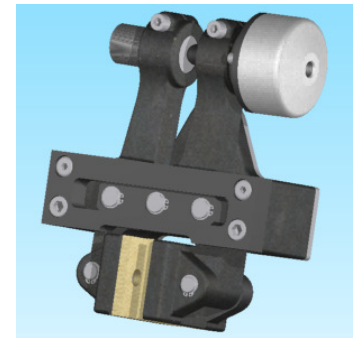
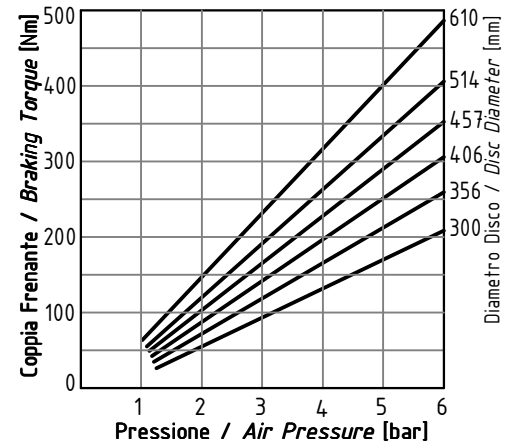
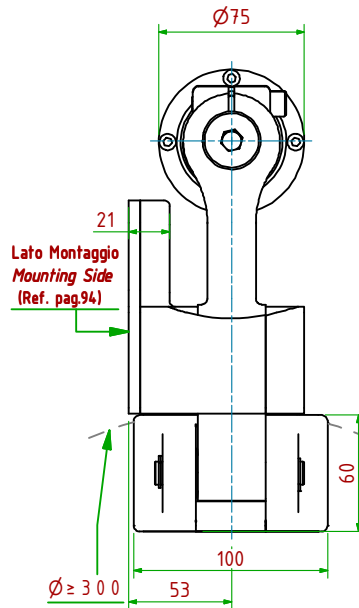
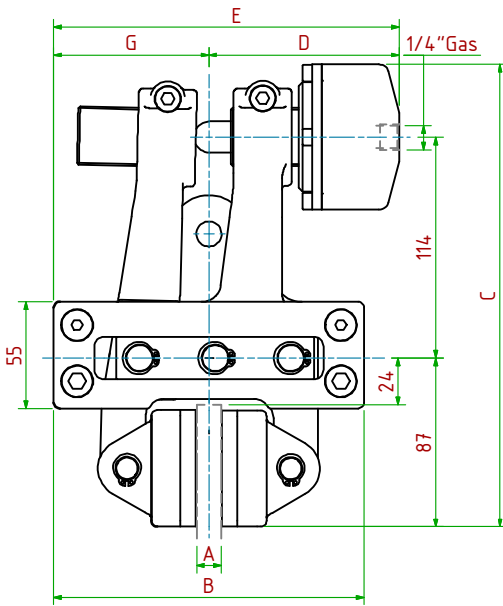


- 工作气压/Operating Pressure: **Pl= 6bar** - 最大气缸容积/Max Cylinder Volume: **175cm<sup>3</sup>**
- Coppia Frenante/Braking Torque: **Md= [Ft x Φ(m) / 2 - 0.029(m)]**
- Importante:** La Coppia Frenante Iniziale può essere più bassa del 30%-50% **Warning:** Initial Braking Torque can be lower of 30%-50%
- Usura Ferodi Massima Totale/Maximum total wear of pads =9mm

MODELLO / MODEL	CODICE / CODE	A	B	C	D <sub>Max</sub>	E <sub>Max</sub>	Forza Frenante/Braking Force	Peso
PPF024/12.7	19.16.024.03	12.7	190	270	102	197	Ft= 14150N (6bar)	11.7 kg
PPF024/25.4	19.16.024.04	25.4	190	270	105	200	Ft= 14150N (6bar)	11.9 kg

PPH031/□□□

气动应用 / Pneumatically Applied

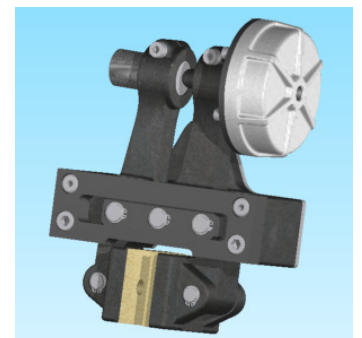
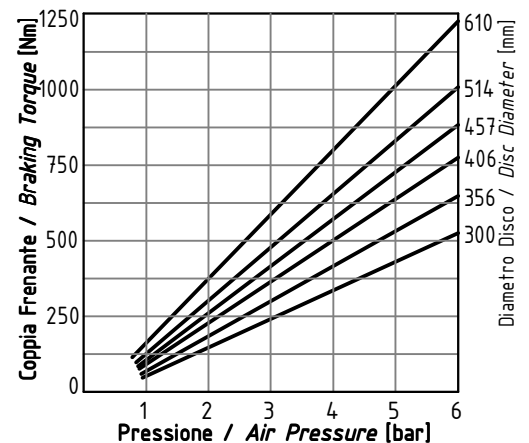
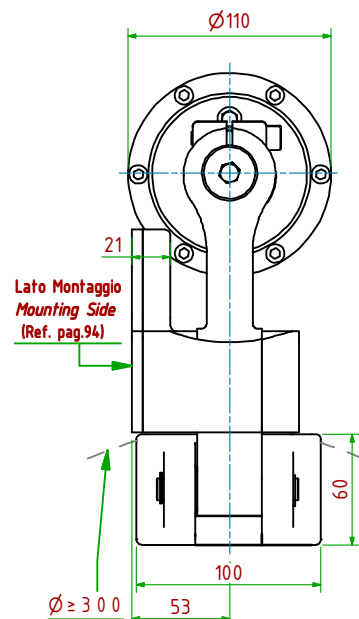
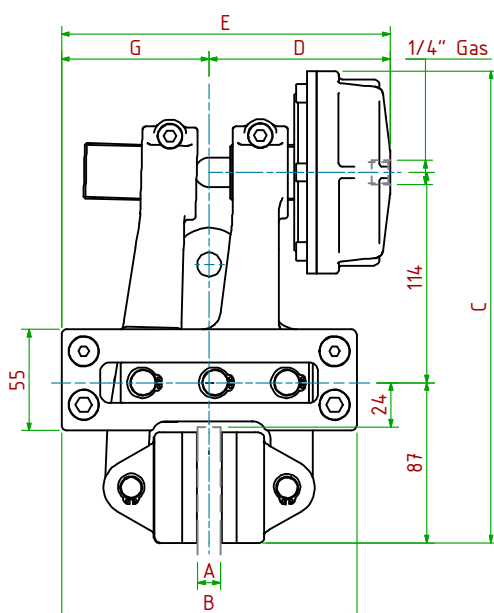


- 工作气压/Operating Pressure: **Pl= 6bar**
- 最大气缸容积/Max Cylinder Volume: **27 cm<sup>3</sup>**
- Coppia Frenante/Braking Torque: **Md= [Ftx(Φ(m)/2-0.033(m))]**
- Usura Ferodi Massima Totale/Maximum total wear of pads =9mm

MODELLO/ MODEL	CODICE/ CODE	A	B	C	D <sub>Max</sub>	E <sub>Max</sub>	G	Forza Frenante/Braking Force	Peso
PPH031/12.7	19.16.031.03	12.7	160	239	98	178	80	Ft= 1800N (6bar)	10.5 kg
PPH031/25.4	19.16.031.04	25.4	180	239	103	193	90	Ft= 1800N (6bar)	10.9 kg

PPH032/□□□

气动应用 / Pneumatically Applied

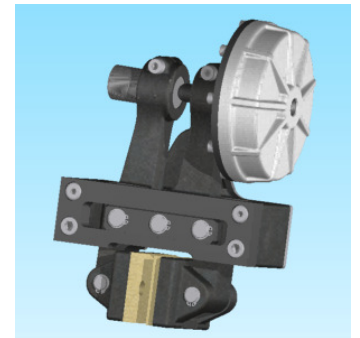
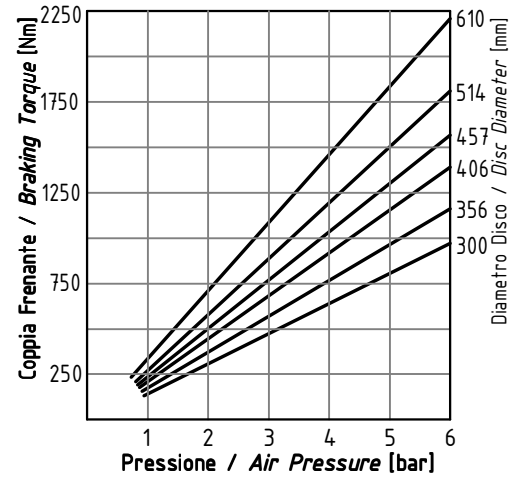
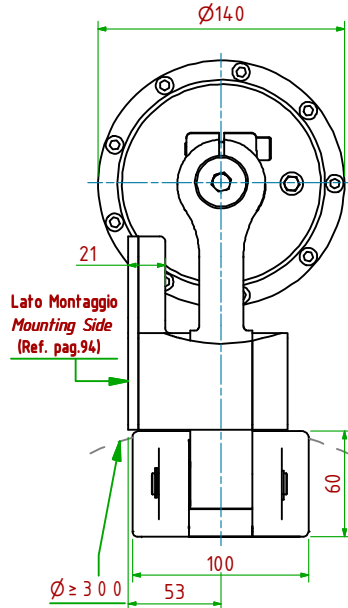
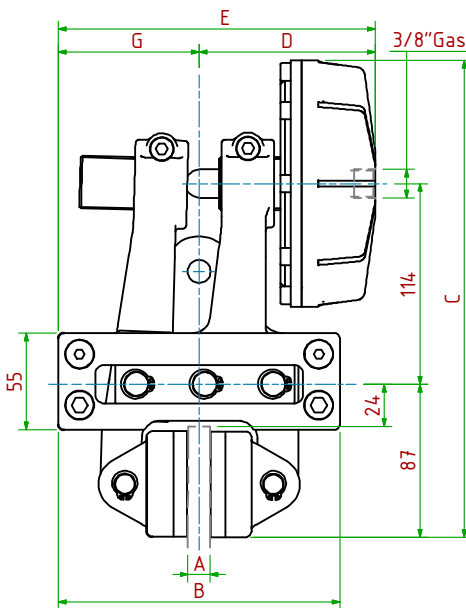


- 工作气压/Operating Pressure: **Pl= 6bar**
- 最大气缸容积/Max Cylinder Volume: **63 cm<sup>3</sup>**
- Coppia Frenante/Braking Torque: **Md= [Ftx(Φ(m)/2-0.033(m))]**
- Usura Ferodi Massima Totale/Maximum total wear of pads =9mm

MODELLO/ MODEL	CODICE/ CODE	A	B	C	D <sub>Max</sub>	E <sub>Max</sub>	G	Forza Frenante/Braking Force	Peso
PPH032/12.7	19.16.032.03	12.7	160	256	98	178	80	Ft= 4500N (6bar)	11.2 kg
PPH032/25.4	19.16.032.04	25.4	180	256	103	193	90	Ft= 4500N (6bar)	11.6 kg

PPH033/□□□

气动应用 / Pneumatically Applied

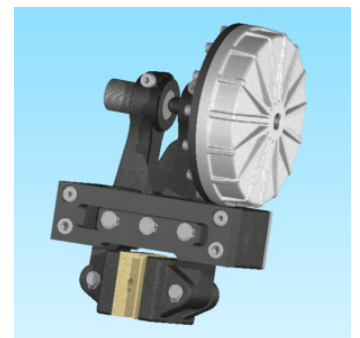
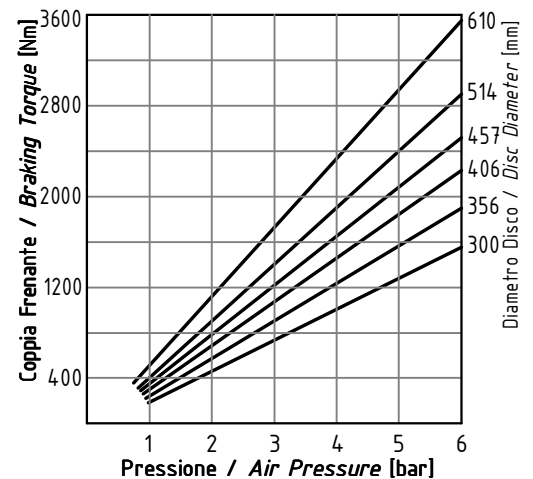
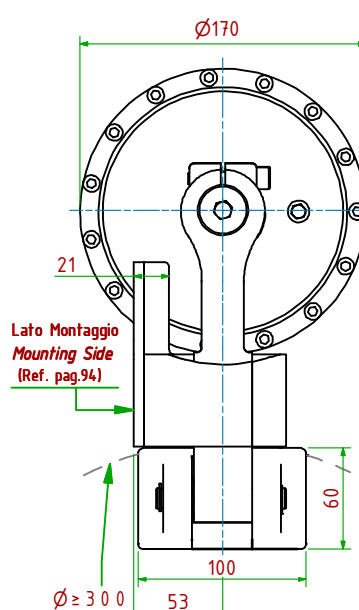
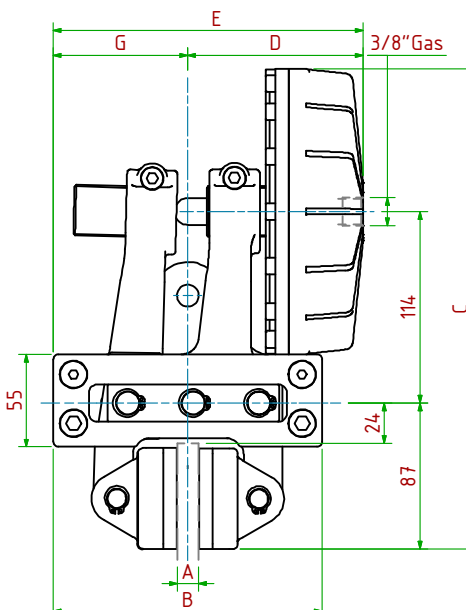


- 工作气压/Operating Pressure: **Pl= 6bar**
- 最大气缸容积/Max Cylinder Volume: **110cm<sup>3</sup>**
- Coppia Frenante/Braking Torque: **Md= [Ftx(Φ(m)/2-0.033(m))]**
- Usura Ferodi Massima Totale/Maximum total wear of pads =9mm

MODELLO/ MODEL	CODICE/ CODE	A	B	C	D <sub>Max</sub>	E <sub>Max</sub>	G	Forza Frenante/Braking Force	Peso
PPH033/12.7	19.16.033.03	12.7	160	271	100	180	80	Ft= 8100N (6bar)	11.7 kg
PPH033/25.4	19.16.033.04	25.4	180	271	105	195	90	Ft= 8100N (6bar)	12.2 kg

PPH034/□□□

气动应用 / Pneumatically Applied

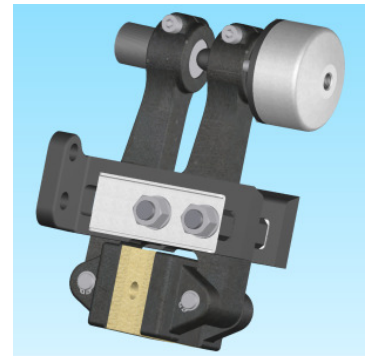
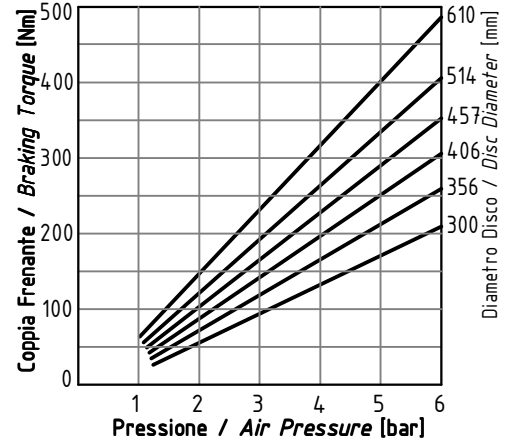
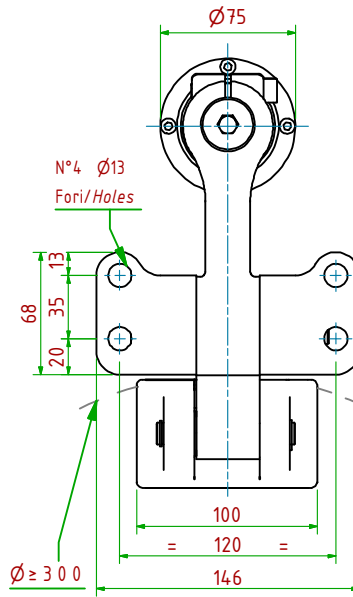
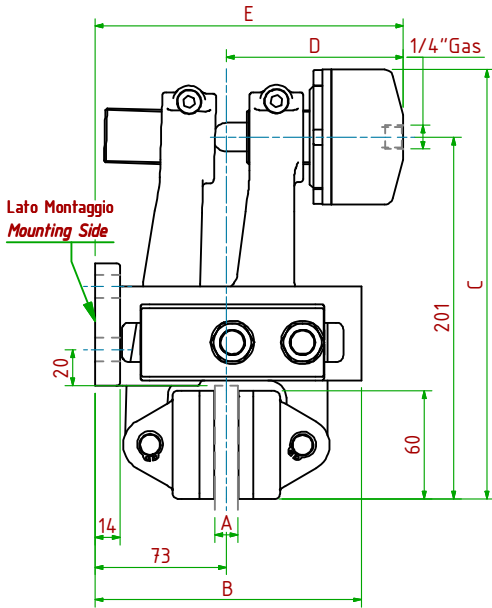


- 工作气压/Operating Pressure: **Pl= 6bar**
- 最大气缸容积/Max Cylinder Volume: **175cm<sup>3</sup>**
- Coppia Frenante/Braking Torque: **Md= [Ftx(Φ(m)/2-0.033(m))]**
- Usura Ferodi Massima Totale/Maximum total wear of pads =9mm

MODELLO/ MODEL	CODICE/ CODE	A	B	C	D <sub>Max</sub>	E <sub>Max</sub>	G	Forza Frenante/Braking Force	Peso
PPH034/12.7	19.16.034.03	12.7	160	286	104	184	80	Ft= 13000N (6bar)	13.4 kg
PPH034/25.4	19.16.034.04	25.4	180	286	109	199	90	Ft= 13000N (6bar)	13.9 kg

PPHP310/□□□

气动应用 / Pneumatically Applied

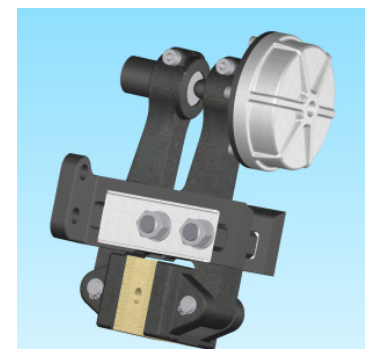
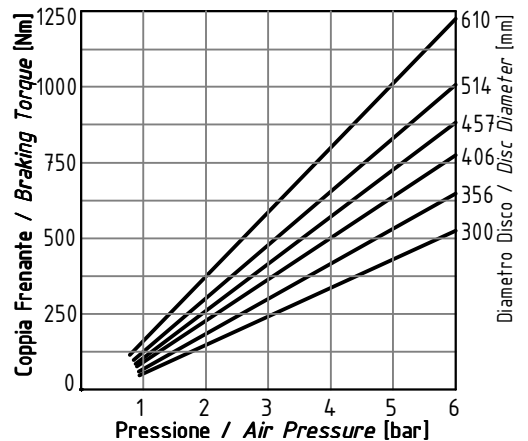
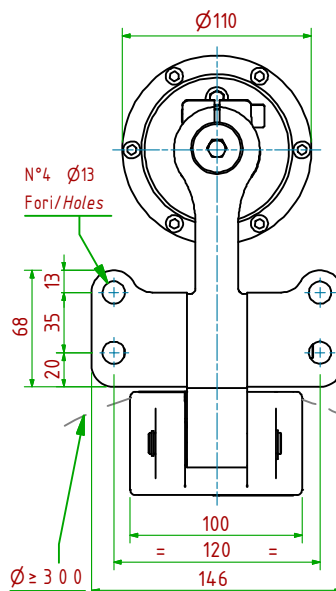
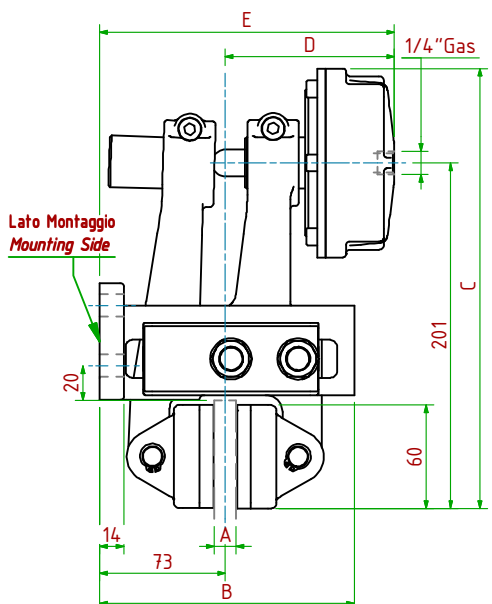


- 工作气压 / Operating Pressure: **Pl= 6bar**
- 最大气缸容积 / Max Cylinder Volume: **27 cm<sup>3</sup>**
- Coppia Frenante / Braking Torque: **Md= [Ftx(Φ(m)/2-0.033(m))]**
- Importante:** La Coppia Frenante Iniziale può essere più bassa del 30%-50% **Warning:** Initial Braking Torque can be lower of 30%-50%
- Usura Ferodi Massima Totale / Maximum total wear of pads =9mm

MODELLO / MODEL	CODICE / CODE	A	B	C	D <sub>Max</sub>	E <sub>Max</sub>	Forza Frenante / Braking Force	Peso
PPHP310/12.7	19.16.310.03	12.7	148	239	98	171	Ft= 1800N (6bar)	8.7 kg
PPHP310/25.4	19.16.310.04	25.4	148	239	105	178	Ft= 1800N (6bar)	8.9 kg

PPHP320/□□□

气动应用 / Pneumatically Applied

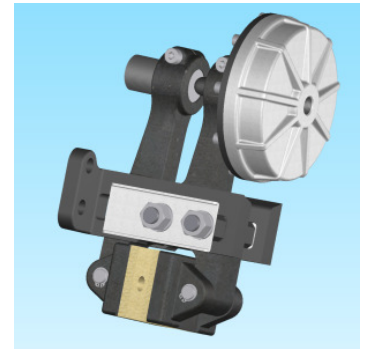
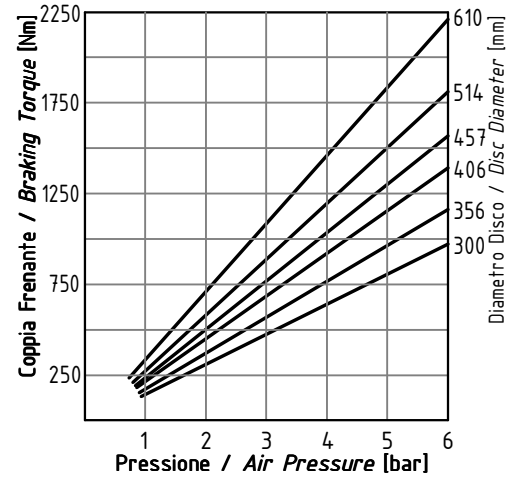
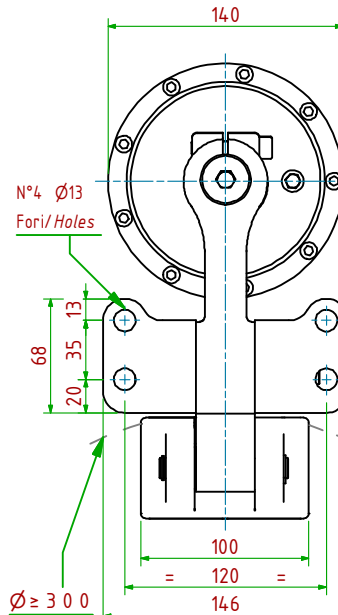
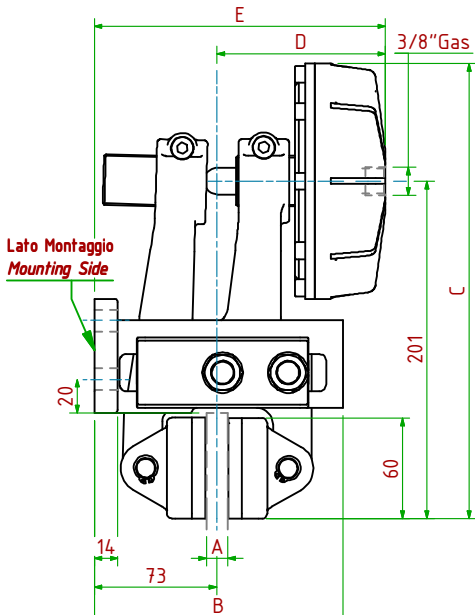


- 工作气压 / Operating Pressure: **Pl= 6bar**
- 最大气缸容积 / Max Cylinder Volume: **63 cm<sup>3</sup>**
- Coppia Frenante / Braking Torque: **Md= [Ftx(Φ(m)/2-0.033(m))]**
- Importante:** La Coppia Frenante Iniziale può essere più bassa del 30%-50% **Warning:** Initial Braking Torque can be lower of 30%-50%
- Usura Ferodi Massima Totale / Maximum total wear of pads =9mm

MODELLO / MODEL	CODICE / CODE	A	B	C	D <sub>Max</sub>	E <sub>Max</sub>	Forza Frenante / Braking Force	Peso
PPHP320/12.7	19.16.320.03	12.7	148	256	98	171	Ft= 4500N (6bar)	9.4 kg
PPHP320/25.4	19.16.320.04	25.4	148	256	105	178	Ft= 4500N (6bar)	9.6 kg

PPHP330/□□□

气动应用 / Pneumatically Applied

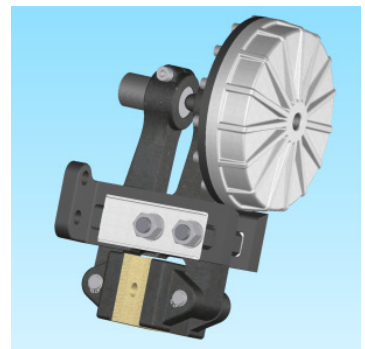
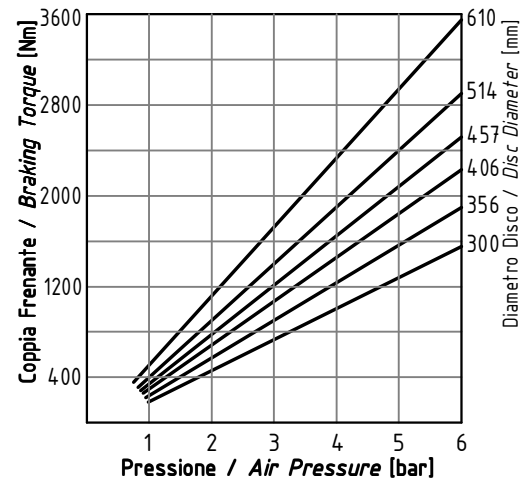
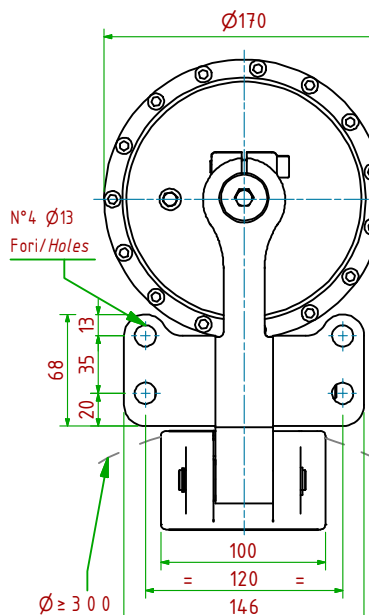
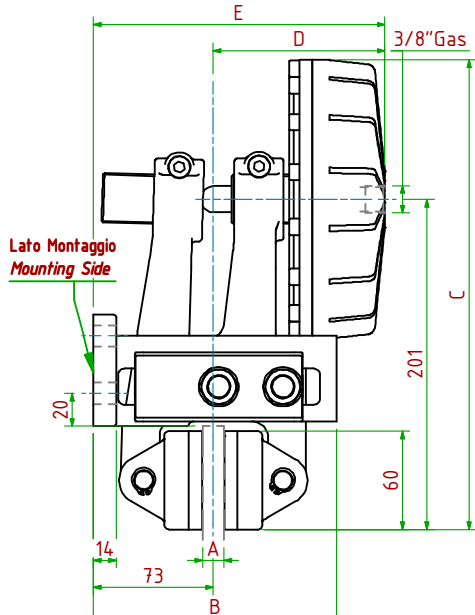


- 工作气压/Operating Pressure: **Pl= 6bar**      - 最大气缸容积/Max Cylinder Volume: **110cm<sup>3</sup>**
- Coppia Frenante/Braking Torque: **Md= [Ftx(Φ(m)/2-0.033(m))]**
- Importante:** La Coppia Frenante Iniziale può essere più bassa del 30%-50%      **Warning:** Initial Braking Torque can be lower of 30%-50%
- Usura Ferodi Massima Totale/Maximum total wear of pads =9mm

MODELLO/MODEL	CODICE/ CODE	A	B	C	D <sub>Max</sub>	E <sub>Max</sub>	Forza Frenante/Braking Force	Peso
PPHP330/12.7	19.16.330.03	12.7	148	271	100	173	Ft= 8100N (6bar)	10.4kg
PPHP330/25.4	19.16.330.04	25.4	148	271	107	180	Ft= 8100N (6bar)	10.6kg

PPHP340/□□□

气动应用 / Pneumatically Applied

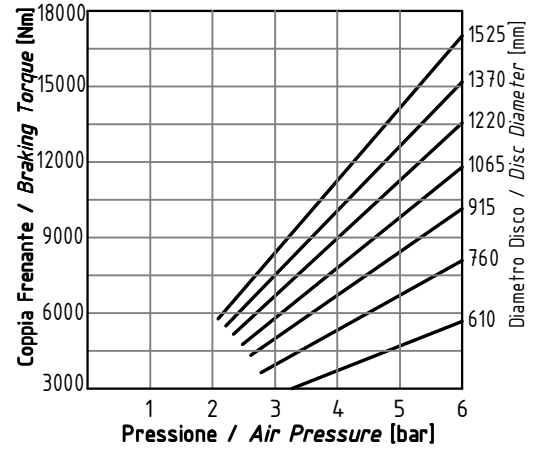
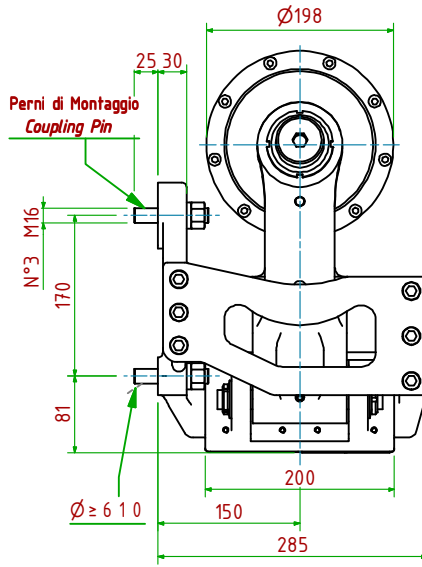
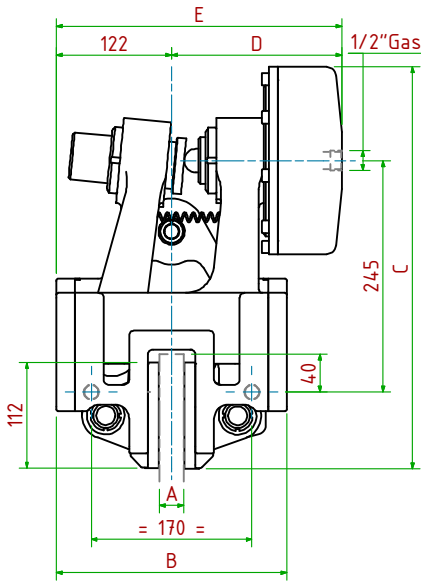


- 工作气压/Operating Pressure: **Pl= 6bar**      - 最大气缸容积/Max Cylinder Volume: **175cm<sup>3</sup>**
- Coppia Frenante/Braking Torque: **Md= [Ftx(Φ(m)/2-0.033(m))]**
- Importante:** La Coppia Frenante Iniziale può essere più bassa del 30%-50%      **Warning:** Initial Braking Torque can be lower of 30%-50%
- Usura Ferodi Massima Totale/Maximum total wear of pads =9mm

MODELLO/MODEL	CODICE/ CODE	A	B	C	D <sub>Max</sub>	E <sub>Max</sub>	Forza Frenante/Braking Force	Peso
PPHP340/12.7	19.16.340.03	12.7	148	286	104	177	Ft= 13000N (6bar)	12.0kg
PPHP340/25.4	19.16.340.04	25.4	148	286	111	184	Ft= 13000N (6bar)	12.2kg

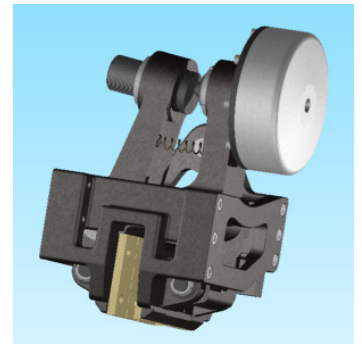
PPT064/ □ □ □

气动应用 / Pneumatically Applied



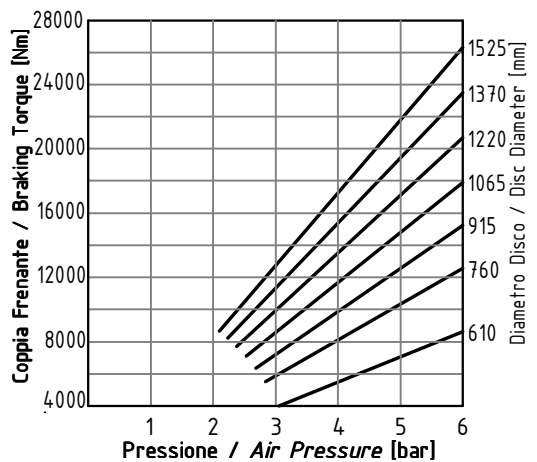
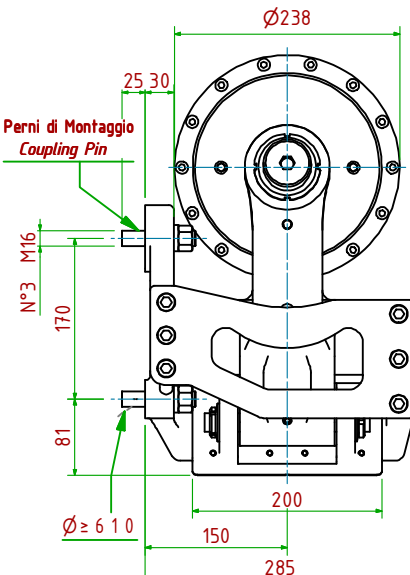
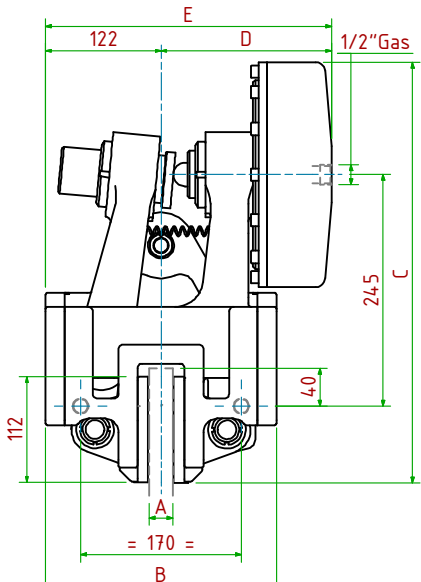
- 工作气压/Operating Pressure: **Pl= 6bar** - 最大气缸容积/Max Cylinder Volume: **0.46dm<sup>3</sup>**
- Coppia Frenante/Braking Torque: **Md= [Ft x (Φ(m)/2 - 0.065(m))]**
- Importante:** La Coppia Frenante Iniziale può essere più bassa del 30%-50% **Warning:** Initial Braking Torque can be lower of 30%-50%
- Usura Ferodi Massima Totale/Maximum total wear of pads =12mm

MODELLO/ MODEL	CODICE/ CODE	A	B	C	D <sub>Max</sub>	E <sub>Max</sub>	Forza Frenante/Braking Force	Peso
PPT064/25.4	19.16.064.04	25.4	24.4	425	181	303	Ft= 23500N (6bar)	61.8 kg
PPT064/ 30	19.16.064.05	30	24.4	425	181	303	Ft= 23500N (6bar)	61.8 kg
PPT064/ 40	19.16.064.06	40	24.4	425	186	308	Ft= 23500N (6bar)	61.8 kg



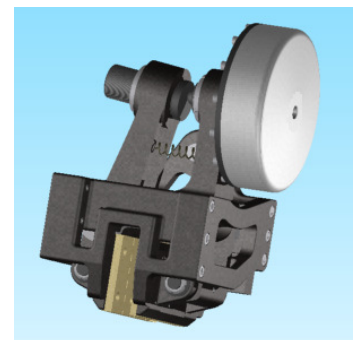
PPT066/ □ □ □

气动应用 / Pneumatically Applied



- 工作气压/Operating Pressure: **Pl= 6bar** - 最大气缸容积/Max Cylinder Volume: **0.69dm<sup>3</sup>**
- Coppia Frenante/Braking Torque: **Md= [Ft x (Φ(m)/2 - 0.065(m))]**
- Importante:** La Coppia Frenante Iniziale può essere più bassa del 30%-50% **Warning:** Initial Braking Torque can be lower of 30%-50%
- Usura Ferodi Massima Totale/Maximum total wear of pads =12mm

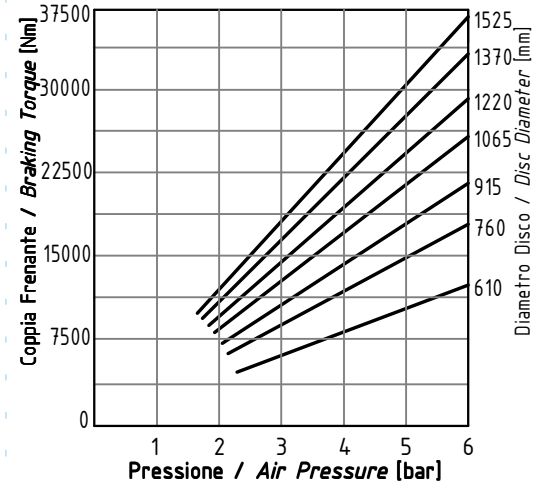
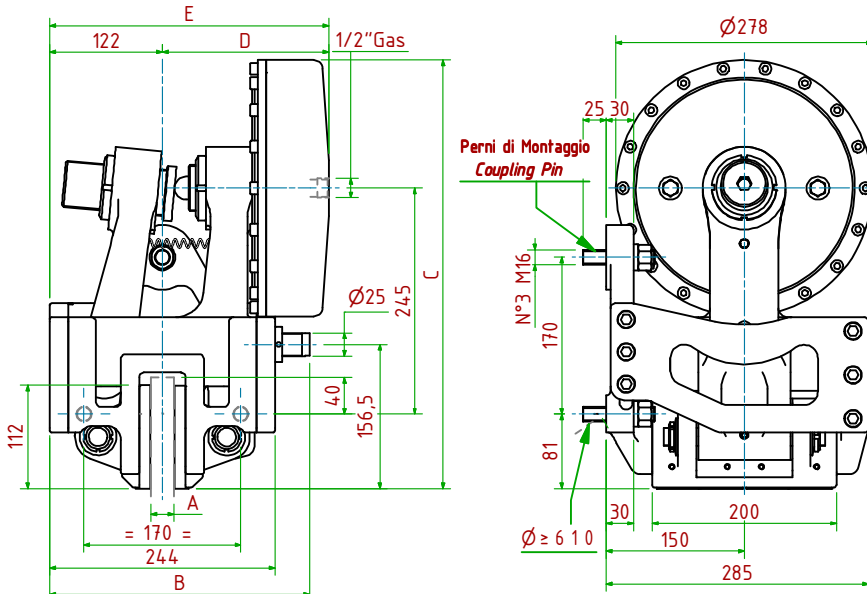
MODELLO/ MODEL	CODICE/ CODE	A	B	C	D <sub>Max</sub>	E <sub>Max</sub>	Forza Frenante/Braking Force	Peso
PPT066/25.4	19.16.066.04	25.4	24.4	445	181	303	Ft= 36600N (6bar)	65.2kg
PPT066/ 30	19.16.066.05	30	24.4	445	181	303	Ft= 36600N (6bar)	65.2kg
PPT066/ 40	19.16.066.06	40	24.4	445	186	308	Ft= 36600N (6bar)	65.2kg





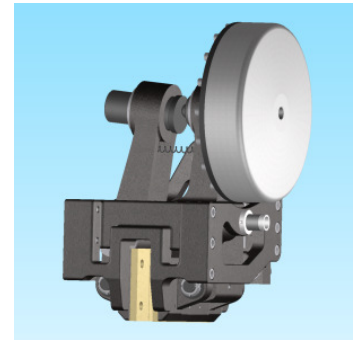
PPT068/ □ □ □

气动应用 / Pneumatically Applied



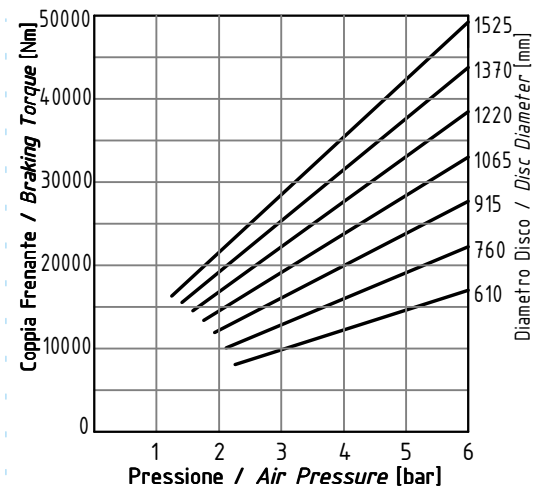
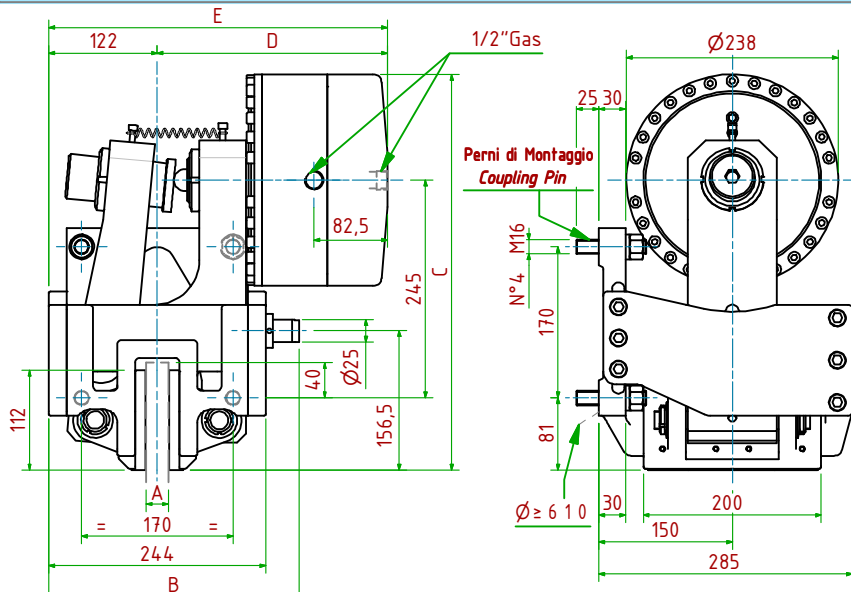
- 工作气压/Operating Pressure: **Pl= 6bar** - 最大气缸容积/Max Cylinder Volume: **0.98dm<sup>3</sup>**
- Coppia Frenante/Braking Torque: **Md= [Ftx(Φ(m)/2-0.065(m))]**
- Importante:** La Coppia Frenante Iniziale può essere più bassa del 30%-50% **Warning:** Initial Braking Torque can be lower of 30%-50%
- Usura Ferodi Massima Totale/Maximum total wear of pads =12mm

MODELLO/MODEL	CODICE/ CODE	A	B	C	D <sub>Max</sub>	E <sub>Max</sub>	Forza Frenante/Braking Force	Peso
PPT068/25.4	19.16.068.04	25.4	282	465	181	303	Ft= 50500N (6bar)	69.2kg
PPT068/ 30	19.16.068.05	30	282	465	181	303	Ft= 50500N (6bar)	69.2kg
PPT068/ 40	19.16.068.06	40	287	465	186	308	Ft= 50500N (6bar)	69.2kg



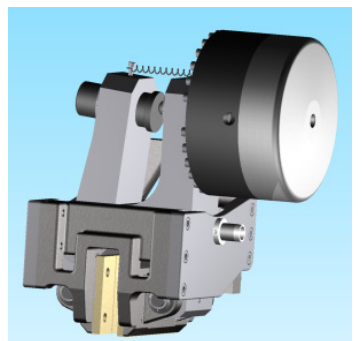
PPT070/ □ □ □

气动应用 / Pneumatically Applied



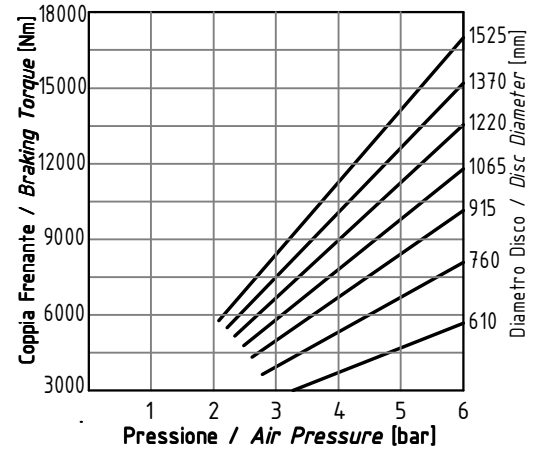
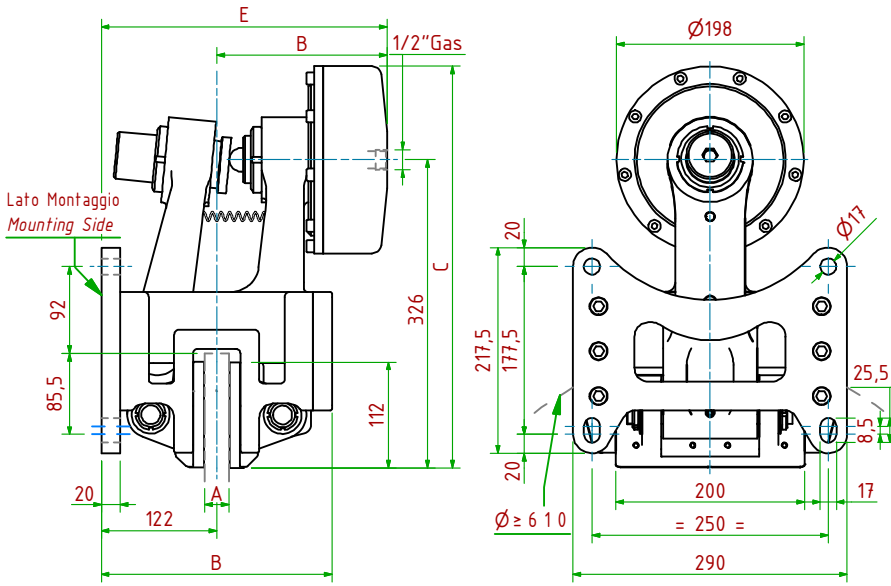
- 工作气压/Operating Pressure: **Pl= 6bar** - 最大气缸容积/Max Cylinder Volume: **1.38dm<sup>3</sup>**
- Coppia Frenante/Braking Torque: **Md= [Ftx(Φ(m)/2-0.065(m))]**
- Importante:** La Coppia Frenante Iniziale può essere più bassa del 30%-50% **Warning:** Initial Braking Torque can be lower of 30%-50%
- Usura Ferodi Massima Totale/Maximum total wear of pads =12mm

MODELLO/MODEL	CODICE/ CODE	A	B	C	D <sub>Max</sub>	E <sub>Max</sub>	Forza Frenante/Braking Force	Peso
PPT070/25.4	19.16.070.04	25.4	282	445	259	381	Ft= 70500N (6bar)	95.0kg
PPT070/ 30	19.16.070.05	30	282	445	259	381	Ft= 70500N (6bar)	95.0kg
PPT070/ 40	19.16.070.06	40	287	445	264	386	Ft= 70500N (6bar)	95.0kg



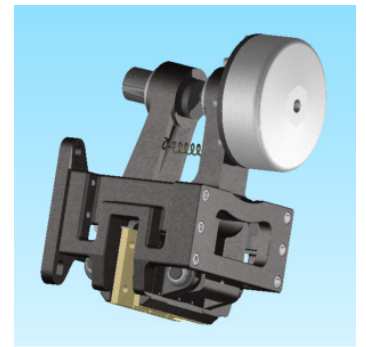
PPTP640/□□□

气动应用 / Pneumatically Applied



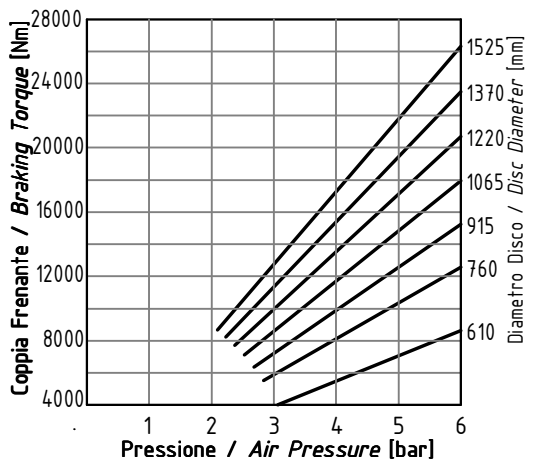
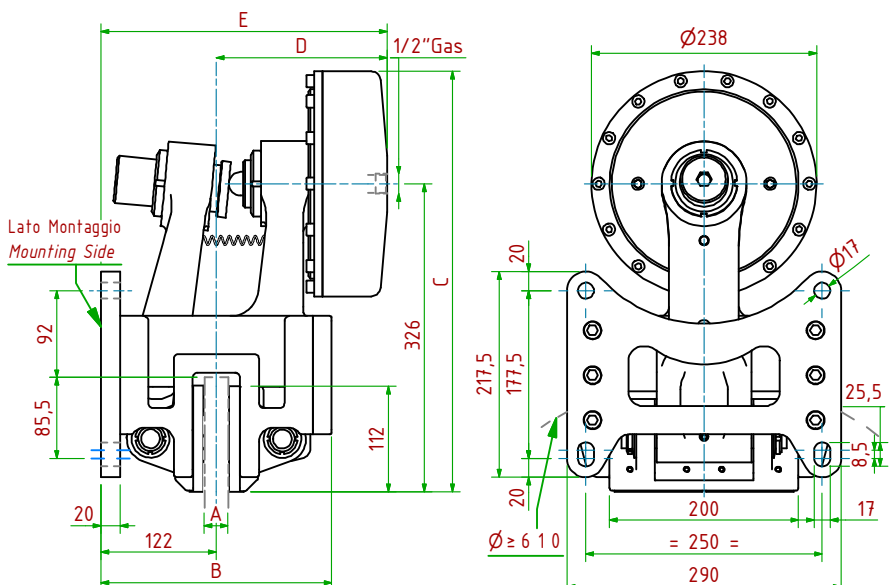
- 工作气压/Operating Pressure: **Pl= 6bar**
- 最大气缸容积/Max Cylinder Volume: **0.46dm<sup>3</sup>**
- Coppia Frenante/Braking Torque: **Md= [Ftx(Φ(m)/2-0.065(m))]**
- Importante:** La Coppia Frenante Iniziale può essere più bassa del 30%-50% **Warning:** Initial Braking Torque can be lower of 30%-50%
- Usura Ferodi Massima Totale/Maximum total wear of pads =12mm

MODELLO/ MODEL	CODICE/ CODE	A	B	C	D <sub>Max</sub>	E <sub>Max</sub>	Forza Frenante/Braking Force	Peso
PPTP640/25.4	19.16.640.04	25.4	244	425	181	303	Ft= 23500N (6bar)	59.8kg
PPTP640/ 30	19.16.640.05	30	244	425	181	303	Ft= 23500N (6bar)	59.8kg
PPTP640/ 40	19.16.640.06	40	244	425	186	308	Ft= 23500N (6bar)	59.8kg



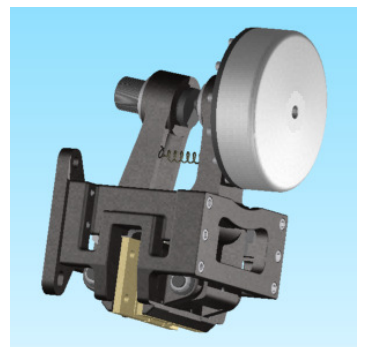
PPTP660/□□□

气动应用 / Pneumatically Applied



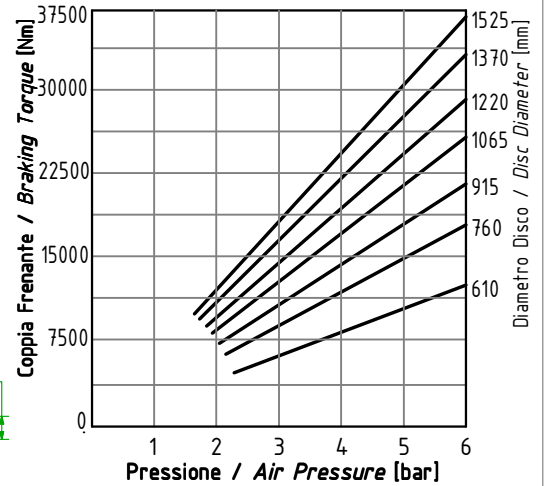
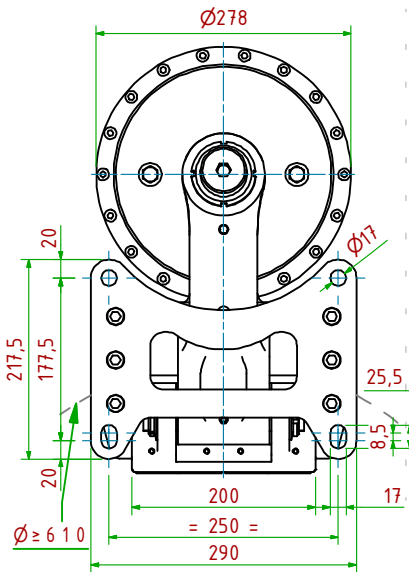
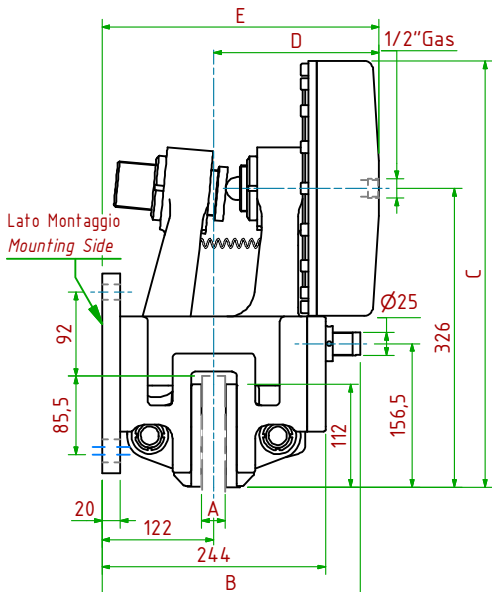
- 工作气压/Operating Pressure: **Pl= 6bar**
- 最大气缸容积/Max Cylinder Volume: **0.69dm<sup>3</sup>**
- Coppia Frenante/Braking Torque: **Md= [Ftx(Φ(m)/2-0.065(m))]**
- Importante:** La Coppia Frenante Iniziale può essere più bassa del 30%-50% **Warning:** Initial Braking Torque can be lower of 30%-50%
- Usura Ferodi Massima Totale/Maximum total wear of pads =12mm

MODELLO/ MODEL	CODICE/ CODE	A	B	C	D <sub>Max</sub>	E <sub>Max</sub>	Forza Frenante/Braking Force	Peso
PPTP660/25.4	19.16.660.04	25.4	244	445	181	303	Ft= 36600N (6bar)	63.1kg
PPTP660/ 30	19.16.660.05	30	244	445	181	303	Ft= 36600N (6bar)	63.1kg
PPTP660/ 40	19.16.660.06	40	244	445	186	308	Ft= 36600N (6bar)	63.1kg



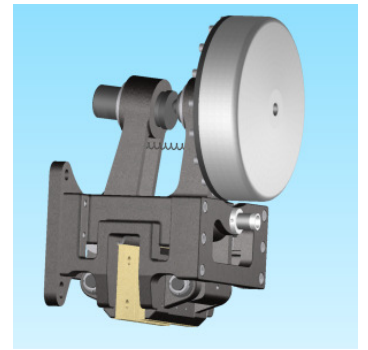
PPTP680/□□□

气动应用 / Pneumatically Applied



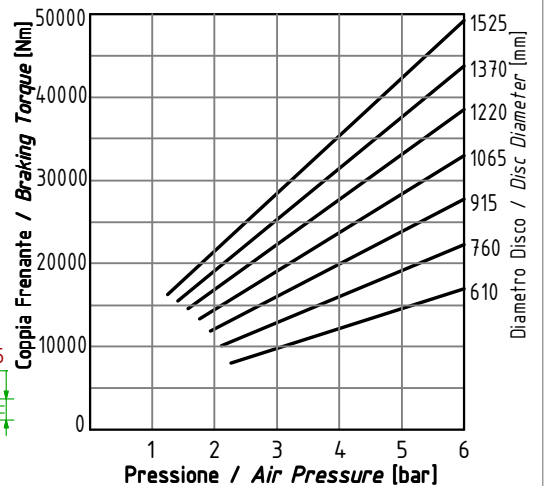
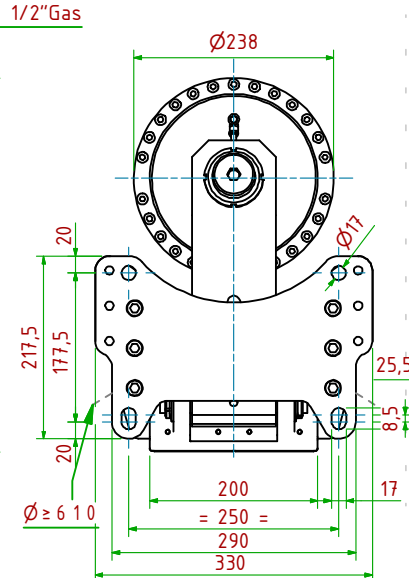
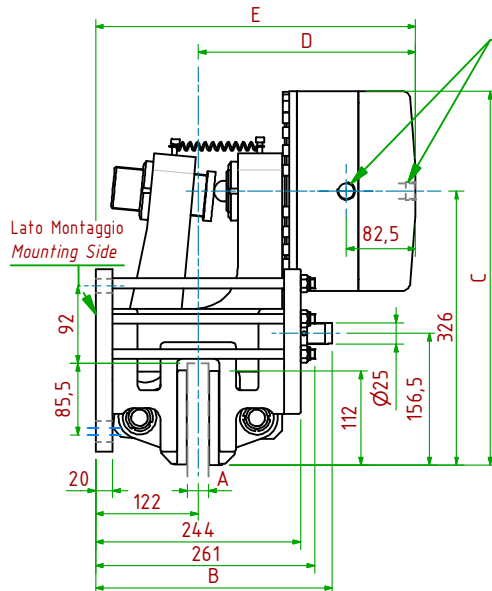
- 工作气压/Operating Pressure: **Pl= 6bar**
- 最大气缸容积/Max Cylinder Volume: **0.98dm<sup>3</sup>**
- Coppia Frenante/Braking Torque: **Md= [Ft×(Φ(m)/2-0.065(m))]**
- Importante:** La Coppia Frenante Iniziale può essere più bassa del 30%-50% **Warning:** Initial Braking Torque can be lower of 30%-50%
- Usura Ferodi Massima Totale/Maximum total wear of pads =12mm

MODELLO/MODEL	CODICE/CODE	A	B	C	D <sub>Max</sub>	E <sub>Max</sub>	Forza Frenante/Braking Force	Peso
PPTP680/25.4	19.16.680.04	25.4	282	465	181	303	Ft= 50500N (6bar)	67.8kg
PPTP680/ 30	19.16.680.05	30	282	465	181	303	Ft= 50500N (6bar)	67.8kg
PPTP680/ 40	19.16.680.06	40	287	465	186	308	Ft= 50500N (6bar)	67.8kg



PPTP700/□□□

气动应用 / Pneumatically Applied



- 工作气压/Operating Pressure: **Pl= 6bar**
- 最大气缸容积/Max Cylinder Volume: **1.38 dm<sup>3</sup>**
- Coppia Frenante/Braking Torque: **Md= [Ft×(Φ(m)/2-0.065(m))]**
- Importante:** La Coppia Frenante Iniziale può essere più bassa del 30%-50% **Warning:** Initial Braking Torque can be lower of 30%-50%
- Usura Ferodi Massima Totale/Maximum total wear of pads =12mm

MODELLO/MODEL	CODICE/CODE	A	B	C	D <sub>Max</sub>	E <sub>Max</sub>	Forza Frenante/Braking Force	Peso
PPTP700/25.4	19.16.700.04	25.4	282	445	259	381	Ft= 70500N (6bar)	96.0kg
PPTP700/ 30	19.16.700.05	30	282	445	259	381	Ft= 70500N (6bar)	96.0kg
PPTP700/ 40	19.16.700.06	40	287	445	264	386	Ft= 70500N (6bar)	96.0kg

